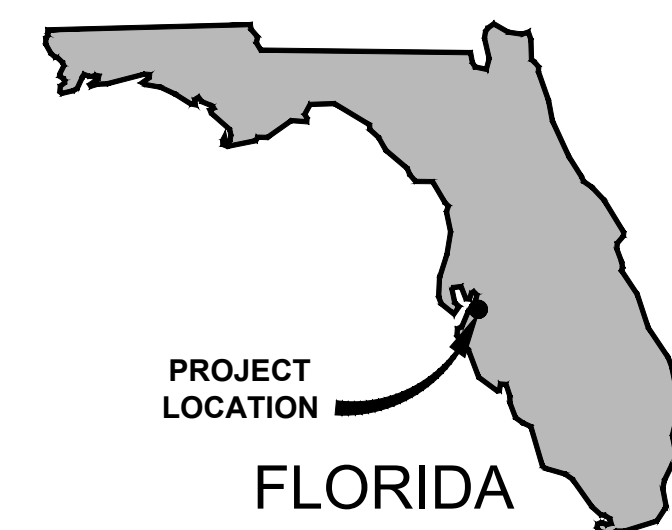
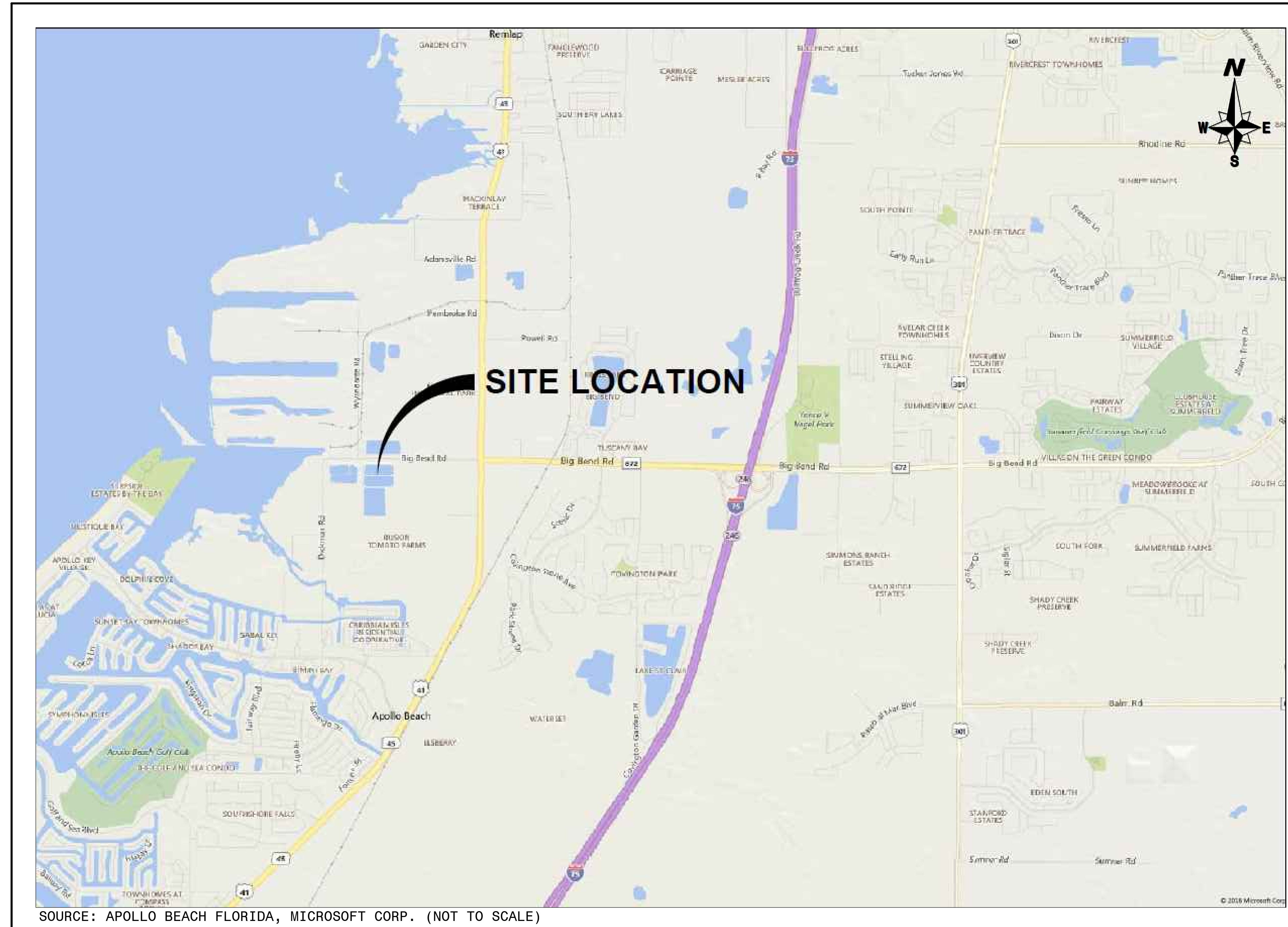


# CONSTRUCTION PLANS FOR: TAMPA ELECTRIC COMPANY BIG BEND ECONOMIZER ASH AND PYRITES POND SYSTEM CLOSURE TEMPORARY HAUL ROAD

APOLLO BEACH, HILLSBOROUGH COUNTY, FLORIDA  
ISSUE FOR CONSTRUCTION

WOOD PROJECT NUMBER: 300996x2

July 11, 2019



## SITE LOCATION MAP

**HILLSBOROUGH COUNTY, FLORIDA  
SECTION 9, TOWNSHIP 31 SOUTH, RANGE 19 EAST**

INDEX OF DRAWINGS	
SHEET NUMBER	TITLE
12408-EY-44BA	COVER
12408-EY-44BB	NOTES
12408-EY-44BC	TEMPORARY HAUL ROAD PLAN VIEW
12408-EY-44BD	TEMPORARY HAUL ROAD PLAN & DETAILS
12408-EY-44BE	TEMPORARY HAUL ROAD DETAIL
12408-EY-44BF	WETLAND IMPACT PLAN VIEW

ATTENTION IS DIRECTED TO THE FACT THAT THESE PLANS MAY HAVE BEEN REDUCED IN SIZE BY REPRODUCTION. THIS MUST BE CONSIDERED WHEN OBTAINING SCALED DATA.

CONTRACTOR IS TO VERIFY EXISTING CONDITIONS PRIOR TO CONSTRUCTION.

**NOTE:**  
CONSTRUCTION PLANS ARE AVAILABLE IN AUTODESK CIVIL 3D FORMAT ONLY. ANY FILE CONVERSIONS WILL BE AT THE CONTRACTOR'S EXPENSE.

ENGINEER CERTIFICATION

I HEREBY CERTIFY THAT I AM A REGISTERED PROFESSIONAL ENGINEER IN THE STATE OF FLORIDA PRACTICING WITH WOOD ENVIRONMENT & INFRASTRUCTURE SOLUTIONS, INC., A CORPORATION AUTHORIZED TO OPERATE AS A BUSINESS PROVIDING ENGINEERING CONSULTING SERVICES; FLORIDA REGISTERED ENGINEERING FIRM F-12, BY THE STATE OF FLORIDA BOARD OF PROFESSIONAL ENGINEERS. I FURTHER CERTIFY THAT I, OR OTHERS UNDER MY DIRECT SUPERVISION, HAVE PREPARED THE GEOTECHNICAL ENGINEERING EVALUATIONS, FINDINGS, CALCULATIONS, CONCLUSIONS OR TECHNICAL ADVICE HEREBY REPRESENTED IN THESE PLANS.

**Tanel Andry**

SIGNATURE: \_\_\_\_\_  
NAME: TANEL NURIYE-ESIN ANDRY, P.E.  
P.E. NUMBER: 56775  
DATE: 7/11/2019

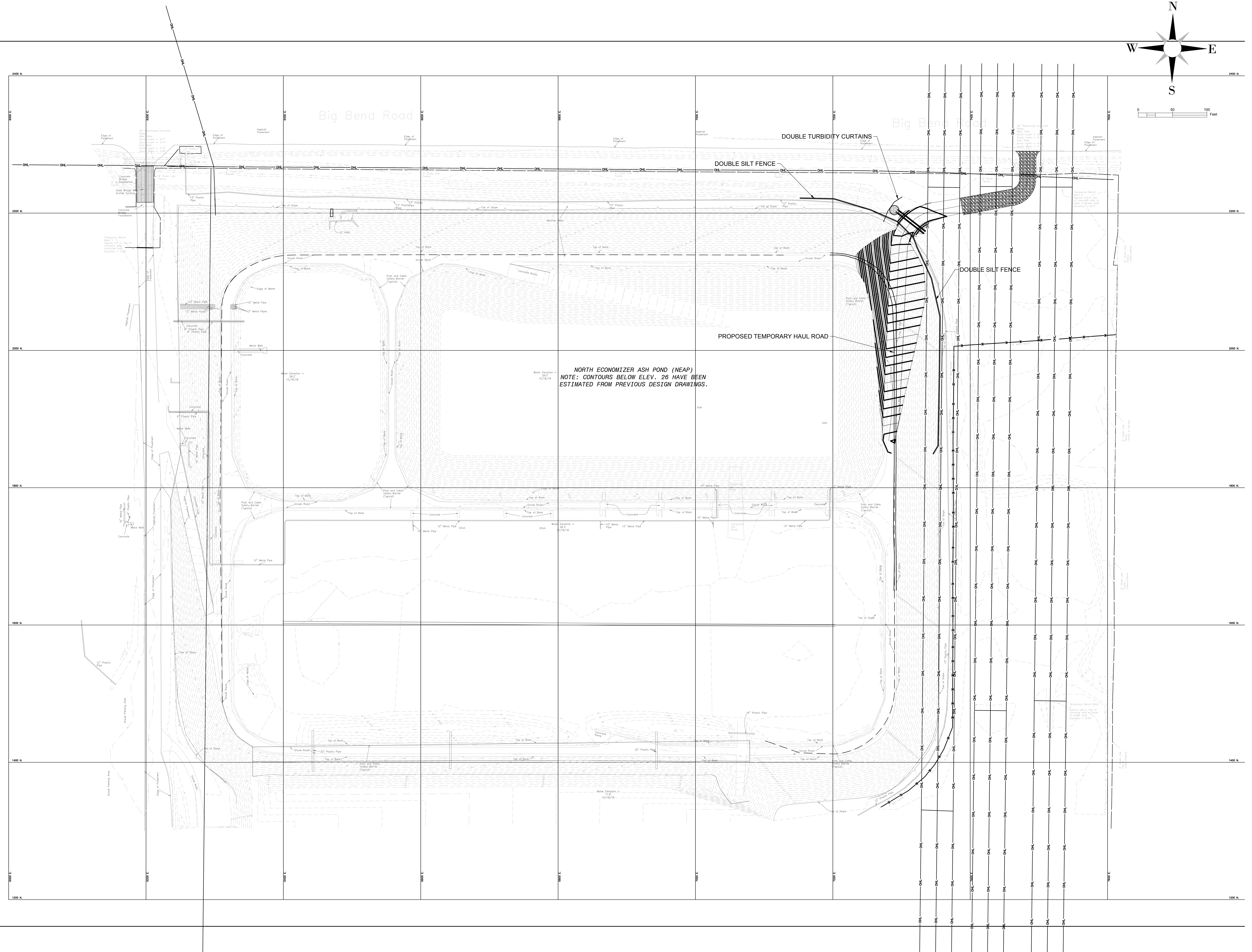
**PLANS PREPARED BY:**

**wood.**  
Environment & Infrastructure Solutions, Inc.  
1101 Chairesville Drive, Suite 200, Tampa, FL 33602  
Phone: 1 813 289 0750 Fax: 1 813 289 5474  
www.woodgroup.com CA-5292





PROJECT NUMBER: 300996X2 CITY: TAMPA  
 Z:\PROJECTS\300996X2\TECO Eco Ash Pond System\2019\Haul Road\July\_2019\300996X2\_Temp Haul Road.dwg LAYOUT: 12408-EY-44BC SANED: 7/11/2019 1:53 PM PLOTSTYLETABLE: CIVIL-MASTER.CTB PLOTTED: 7/11/2019 1:25 PM BY: WIVES, MARTIN



NORTH ECONOMIZER ASH POND (NEAP)  
 NOTE - CONTOURS BELOW ELEV. 26 HAVE BEEN  
 ESTIMATED FROM PREVIOUS DESIGN DRAWINGS.

TAMPA ELECTRIC CO.  
 BIG BEND POWER STATION  
 ECONOMIZER ASH POND CLOSURE  
 TEMPORARY HAUL ROAD PLAN VIEW  
 APOLLO BEACH, FLORIDA

DATE: July 11, 2019  
 DRAWN BY: M.VIVES  
 CHECKED BY: T. ANDRY  
 PROJECT NO.: 300996X2

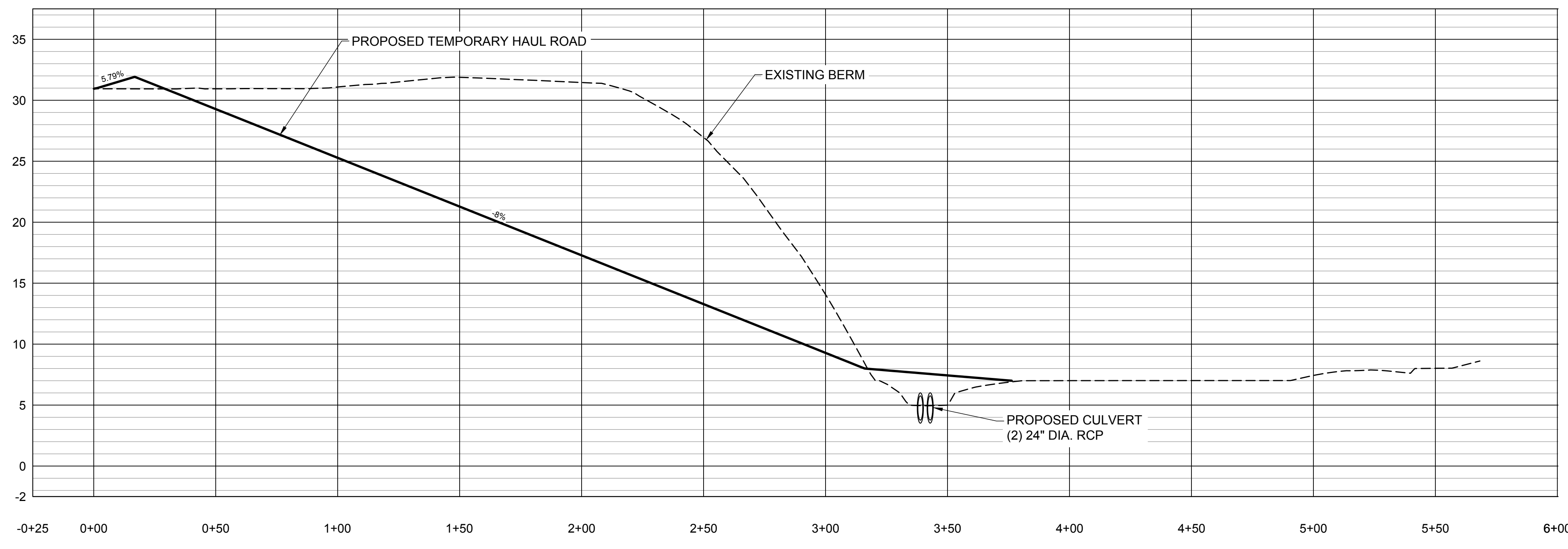
**wood.**  
 Environment & Infrastructure Solutions, Inc.  
 1515 Chamberlain Drive, Suite 200, Tampa, FL 33622  
 Phone: 813.288.8800  
 www.woodgroup.com

NO.	DATE	ISSUED FOR CONSTRUCTION	REVISION
0	3/22/19		

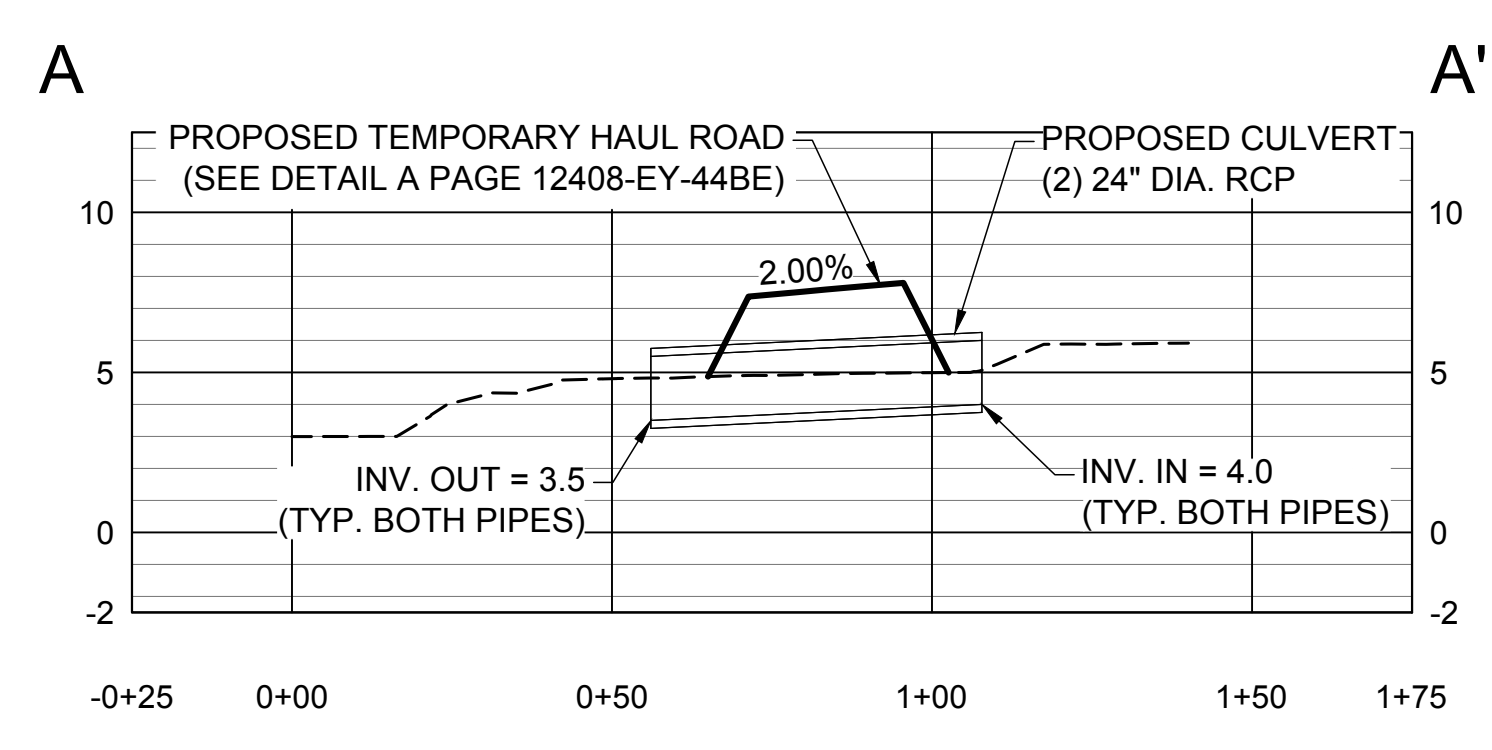
12408-EY-44BC



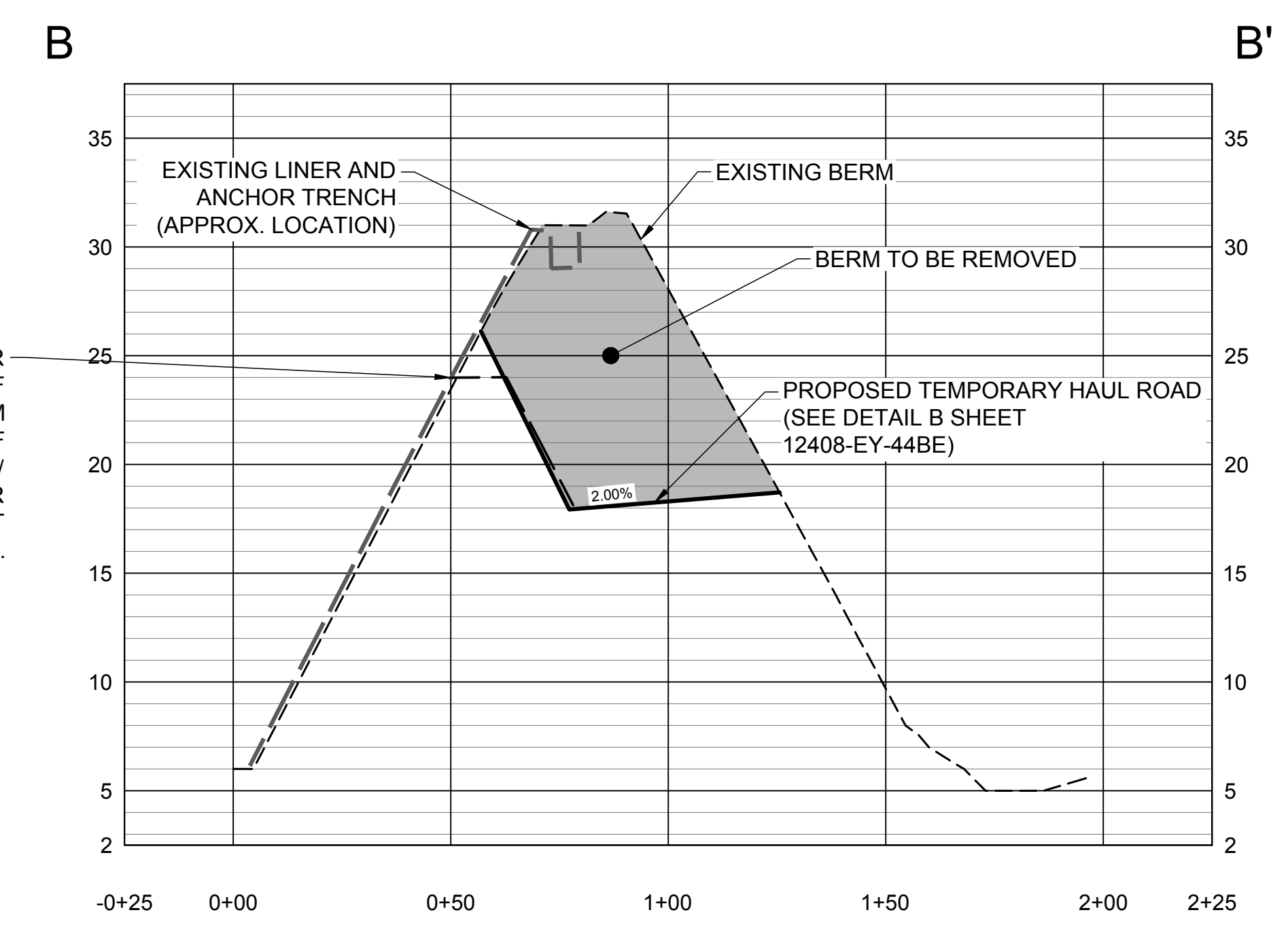
PROJECT NUMBER: 300996X2 CITY: TAMPA  
 Z:\PROJECTS\C3030966X2\TECO Eco Ash Pond System\2019\Haul Road\July\_2019\300996X2\_Temp Haul Road - 4.dwg LAYOUT: 12408-EY-44BE SAVED: 7/11/2019 1:51 PM PLOTSTYLETABLE: CIVIL\_MASTER.CTB PLOTTED: 7/11/2019 1:51 PM BY: WIVES, MARTIN



**2 PROFILE VIEW**

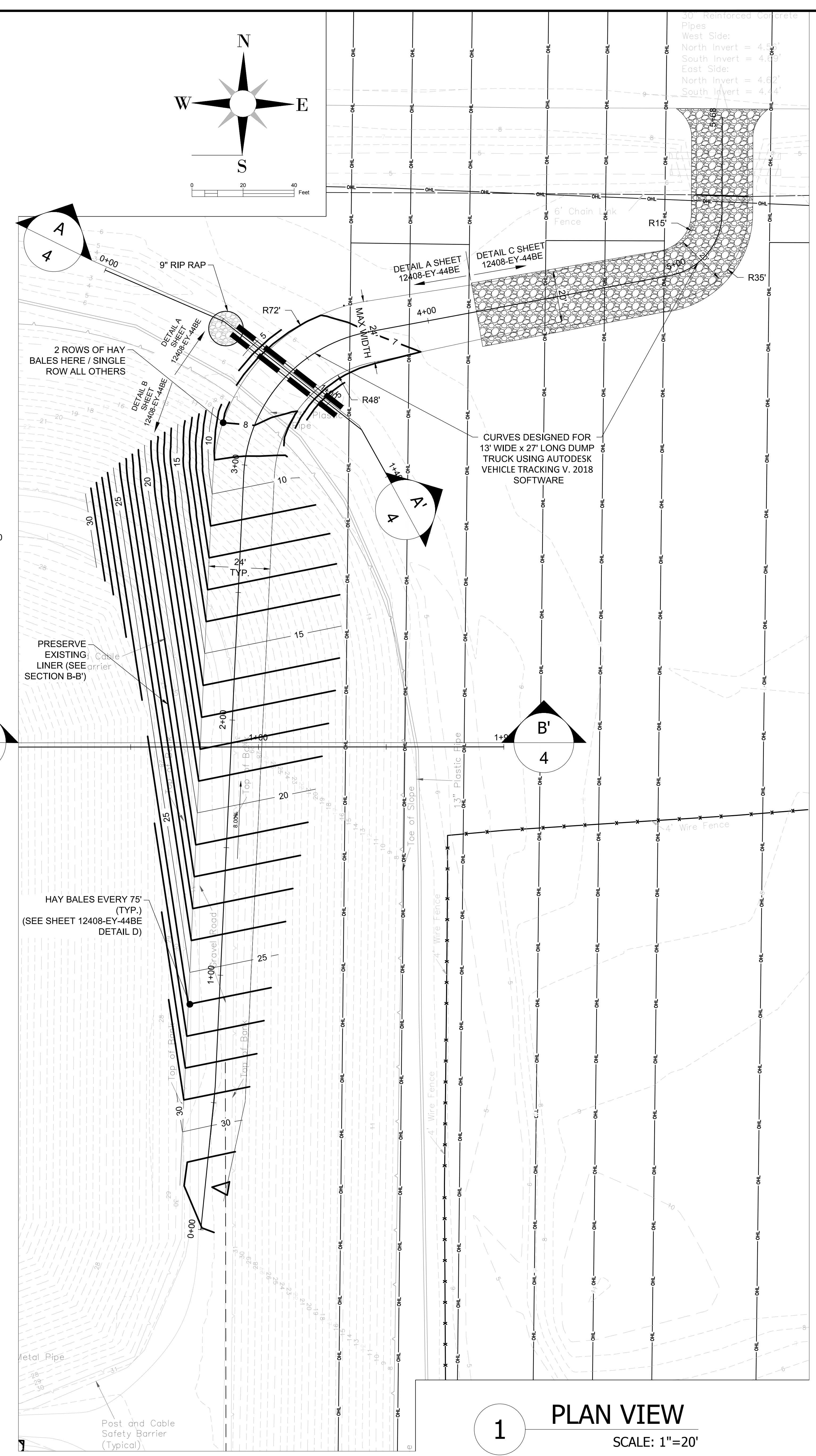
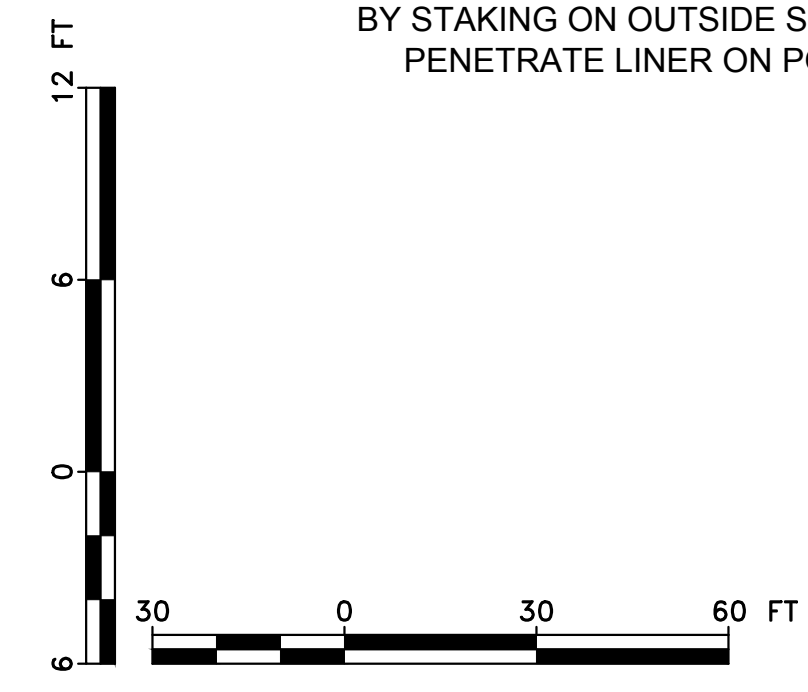


**A CROSS SECTION A-A'**  
SCALE: AS SHOWN



**B CROSS SECTION B-B'**  
SCALE: AS SHOWN

PRESERVE EXISTING LINER. EXCAVATE ANCHOR TRENCH AND ROLL LINER OUT OF WAY OF EXCAVATION. PREVENT STORMWATER FROM ENTERING BENEATH LINER. AFTER GRADING OF INTERIOR SLOPE IS COMPLETE, REPLACE / REANCHOR LINER OVER NEW SLOPE. REANCHOR BY STAKING ON OUTSIDE SLOPE. DO NOT PENETRATE LINER ON POND INTERIOR.



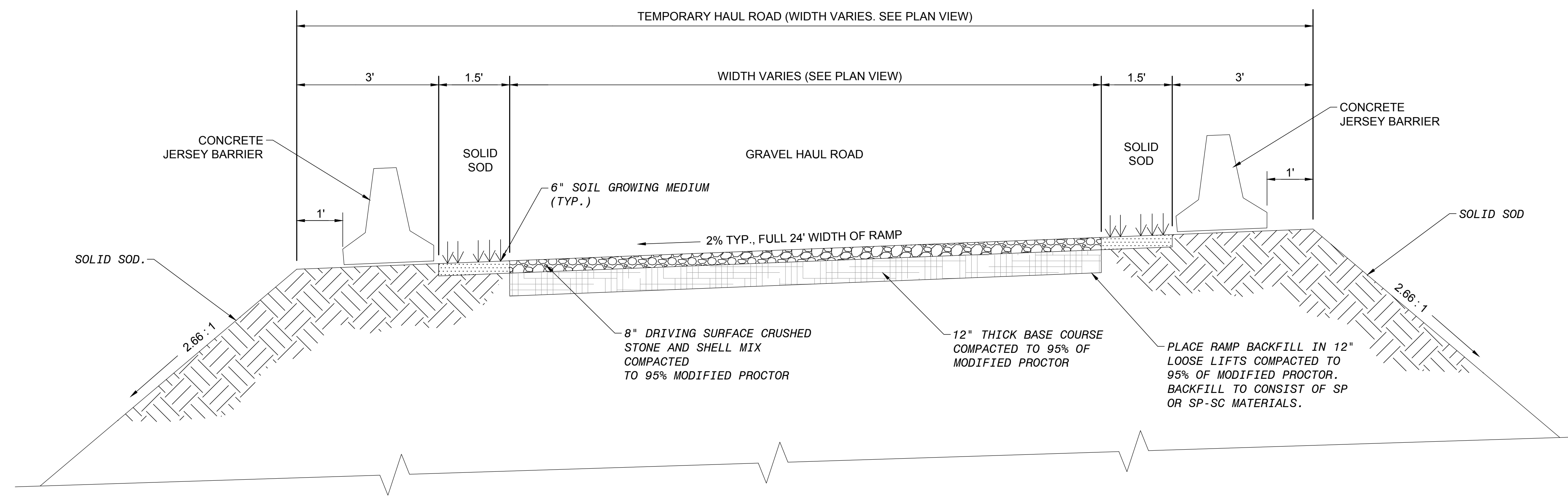
**1 PLAN VIEW**  
SCALE: 1"=20'

NO.	DATE	ISSUED FOR CONSTRUCTION	REVISION
0	3/22/19		

**wood.**  
 Environment & Infrastructure Solutions, Inc.  
 1510 Commercial Drive, Suite 200, Tampa, FL 33602  
 Phone: 813.288.8888  
 www.woodgroup.com

**TAMPA ELECTRIC CO.**  
**BIG BEND POWER STATION**  
**ECONOMIZER ASH POND CLOSURE**  
**TEMPORARY HAUL ROAD PLAN & DETAILS**  
**SAPOLLO BEACH, FLORIDA**

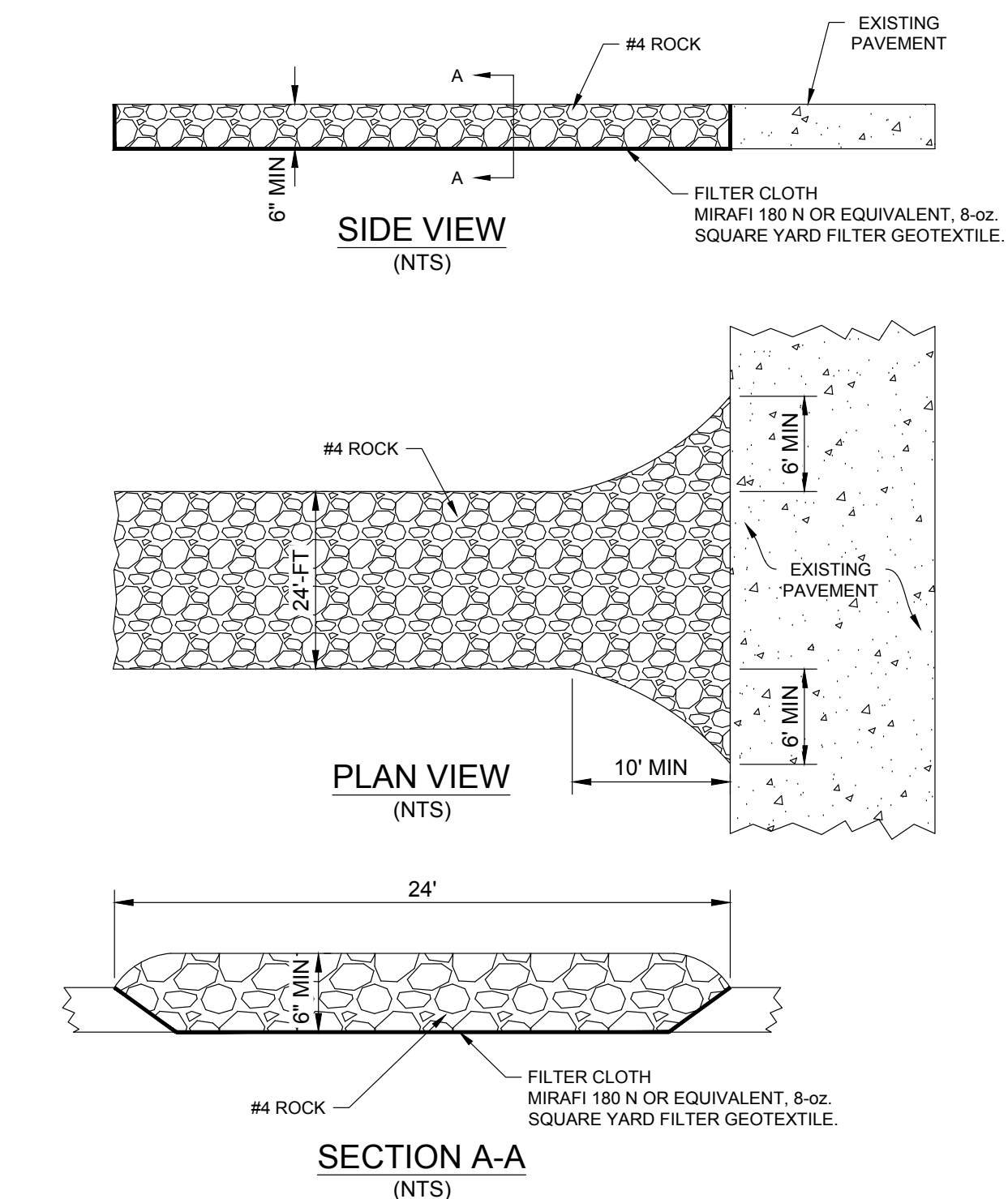
DATE: July 11, 2019  
 DRAWN BY: M. VIVES  
 CHECKED BY: T. ANDRY  
 PROJECT NO.: 300996X2



NOTE: REFER TO FDOT FY 2017-18 DESIGN STANDARDS, "TYPE K TEMPORARY CONCRETE BARRIER SYSTEM", INDEX No. 414, FOR CONCRETE BARRIER SYSTEM DETAILS.

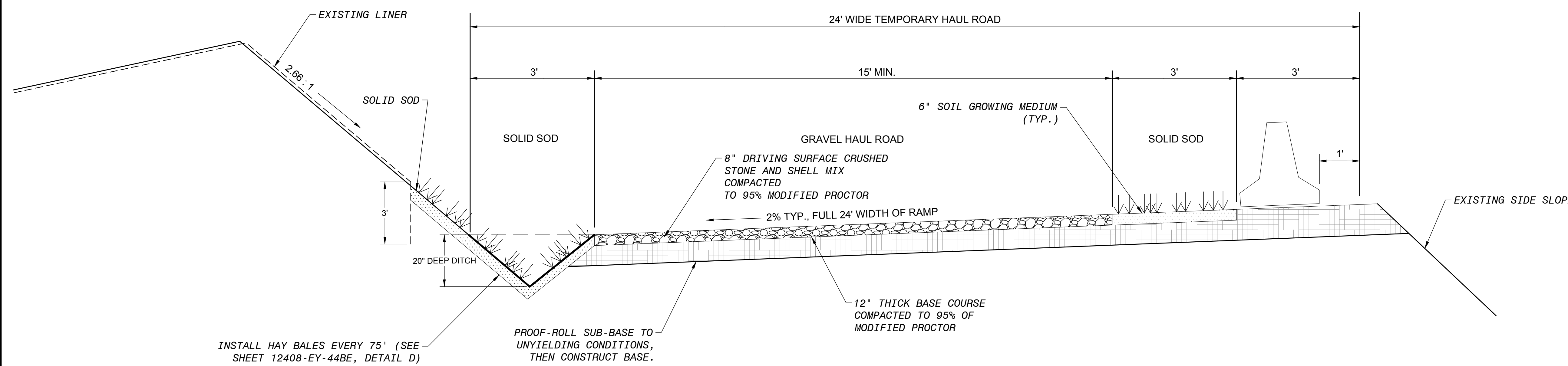
TYPICAL SECTION BETWEEN STATIONS: 3+22 TO 4+22

**DETAIL A**



SOIL TRACKING PREVENTION DEVICE DETAIL  
TYPICAL SECTION BETWEEN STATIONS: 4+22 TO 5+58 (END)

**DETAIL C**



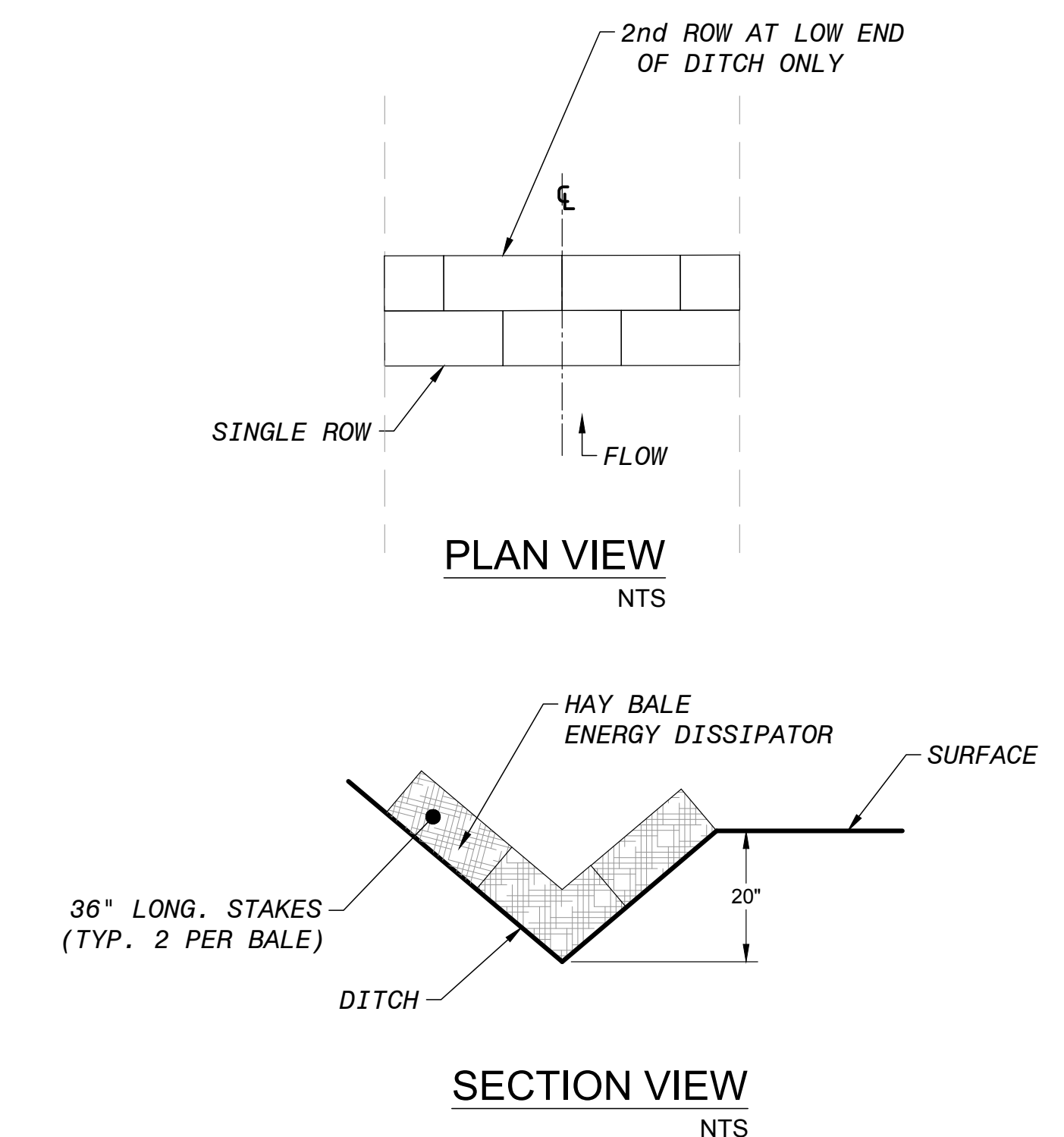
INSTALL HAY BALES EVERY 75' (SEE SHEET 12408-EY-44BE, DETAIL D)

PROOF-ROLL SUB-BASE TO UNYIELDING CONDITIONS, THEN CONSTRUCT BASE.

NOTE: REFER TO FDOT FY 2017-18 DESIGN STANDARDS, "TYPE K TEMPORARY CONCRETE BARRIER SYSTEM", INDEX No. 414, FOR CONCRETE BARRIER SYSTEM DETAILS.

TYPICAL SECTION BETWEEN STATIONS: 0+00 TO 3+22

**DETAIL B**



SECTION VIEW  
NTS

**DETAIL D**

PROJECT NUMBER: 300996X2 CITY: TAMPA  
2:PROJECTS:CD300996X2.ecd Eco Ash Pond Closure TECD  
LAYOUT: 12408-EY-44BE  
SAVED: 7/11/2019 1:59 PM  
PLOTSTYLETABLE: CIVIL-MASTER.CTB  
PLOTTED: 7/11/2019 1:21 PM  
BY: WIVES, MARTIN

**wood.**  
Environment & Infrastructure Solutions, Inc.  
1510 Chumley Drive, Suite 200, Tampa, FL 33622  
Phone: 813.288.1000  
www.woodgroup.com

**TAMPA ELECTRIC CO.  
BIG BEND POWER STATION  
ECONOMIZER ASH POND CLOSURE  
TEMPORARY HAUL ROAD DETAIL  
APOLLO BEACH, FLORIDA**

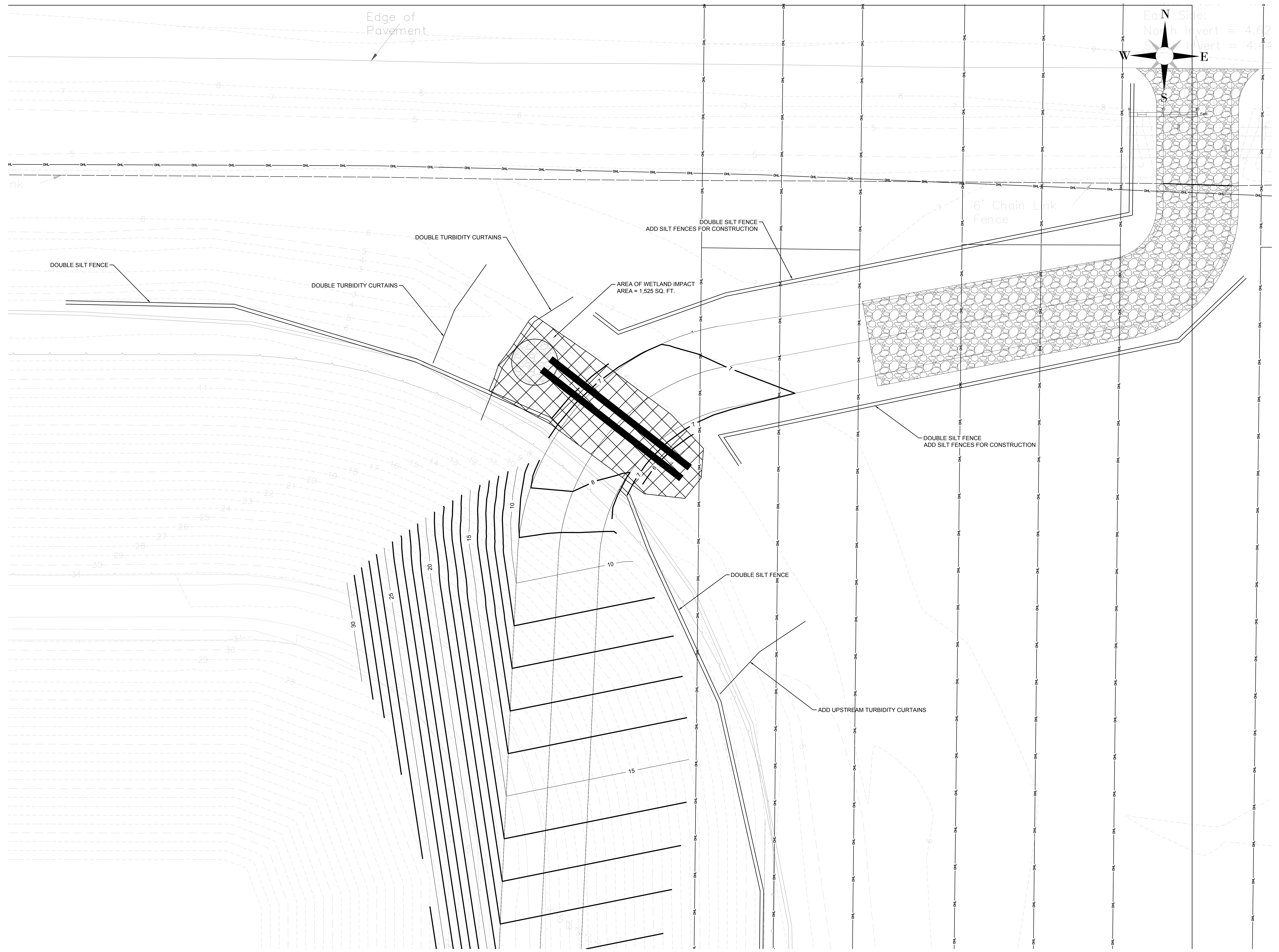
DATE: July 11, 2019  
DRAWN BY: M.VIVES  
CHECKED BY: T.ANDREY  
PROJECT NO.: 300996X2

12408-EY-44BE

NO.	DATE	ISSUED FOR CONSTRUCTION	REVISION
0	3/22/19		



PROJECT NUMBER: 300996X2 CITY: TAMPA  
 Z:\PROJECTS\C3030996X2\TECO Eco Ash Pond System\2019\Plan\Road\July\_2019\300996X2\_Temp\Haul Road.dwg LAYOUT: 12408-EY-44BF SAVED: 7/11/2019 1:19 PM PLOTTSTYLETABLE: CIVIL-MASTER.CTB PLOTTED: 7/11/2019 1:19 PM BY: IVES, MARTIN



NO.	DATE	ISSUED FOR CONSTRUCTION	REVISION
0	3/22/19		

**wood.**  
 Environment & Infrastructure Solutions, Inc.  
 1515 Chamberlain Drive, Suite 200, Tampa, FL 33622  
 Phone: (813) 973-4247  
 www.woodgroup.com

**TAMPA ELECTRIC CO.  
 BIG BEND POWER STATION**  
**ECONOMIZER ASH POND CLOSURE  
 WETLAND IMPACT PLAN VIEW  
 APOLLO BEACH, FLORIDA**

DATE: July 11, 2019  
 DRAWN BY: M.VIVES  
 CHECKED BY: T.ANDRY  
 PROJECT NO.: 300996X2