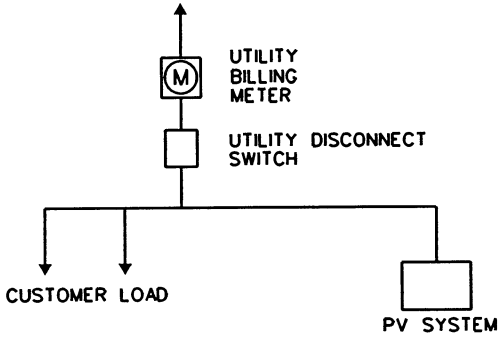


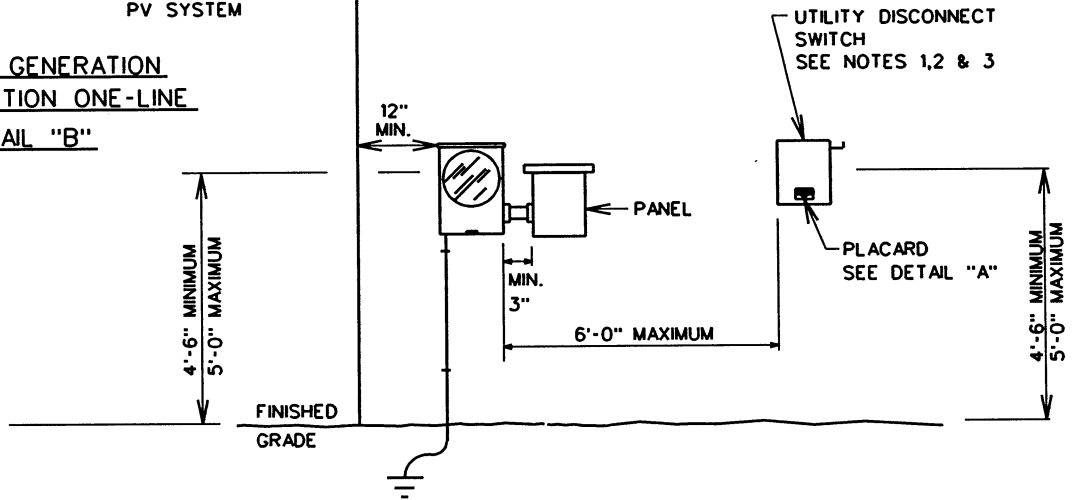
SEE NOTE 3

DETAIL "A"

TAMPA ELECTRIC COMPANY SERVICE



RENEWABLE GENERATION  
INTERCONNECTION ONE-LINE  
DETAIL "B"



NOTES:

1. A MANUAL LOAD BREAK DISCONNECT SWITCH PROVIDING A LOCKABLE VISIBLE BREAK SEPARATION BETWEEN THE UTILITY POWER AND THE AC POWER OUTPUT OF THE RENEWABLE GENERATOR SYSTEM (RGS) SHALL BE PROVIDED. THE UTILITY DISCONNECT SWITCH SHOULD BE MOUNTED ADJACENT TO THE UTILITY METER SOCKET ENCLOSURE WITHIN A 6'-0" MAXIMUM DISTANCE, AND SHALL MEET THE ACCESSIBILITY REQUIREMENTS SPECIFIED IN SESR SECTION VII E FOR METERING EQUIPMENT.
2. THE FRONT COVER OF THE UTILITY DISCONNECT SWITCH SHALL CONTAIN A PLACARD IDENTIFYING THE ON-SITE POWER GENERATION SOURCE. SEE DETAIL "A".
3. THE PERMANENT AND DURABLE PLACARD SHALL BE NON-FERROUS METAL OR POLY-PLASTIC PLATES, UV RESISTANT, EPOXY GLUED OR RIVETED TO THE FRONT COVER OF THE DISCONNECT SWITCH WITH ENGRAVED OR STAMPED LETTERING A MINIMUM OF 1/4 HIGH, WHITE LETTERS ON A RED BACKGROUND. THE USE OF PEEL-AND-STICK LABELS, PAINT, OR MARKING PENS TO LABEL THE PLATES IS NOT ACCEPTABLE.
4. CUSTOMERS CONSIDERING INTERCONNECTION WITH NET METERING TO A RENEWABLE ENERGY SYSTEM INSTALLED AT THEIR SITE MUST COMPLETE THE APPLICATION, INTERCONNECTION AGREEMENT AND OTHER REQUIRED DOCUMENTATION AND FORWARD THEM TO TAMPA ELECTRIC CO. EARLY IN THE DESIGN PROCESS. DISCONNECT SWITCH MUST BE INSPECTED AND APPROVED BY TAMPA ELECTRIC CO. PRIOR TO PLACING SYSTEM IN SERVICE.

RENEWABLE GENERATION SYSTEM  
UTILITY DISCONNECT REQUIREMENTS

TAMPA  
ELECTRIC  
COMPANY

STANDARD ELECTRICAL  
SERVICE REQUIREMENTS

DISTRIBUTION ENGINEERING  
2200 E. SLIGH AVE  
TAMPA FL. 33610  
PH. - (813) 275-3053

DATE EFFECTIVE: 12-10-09

7.52