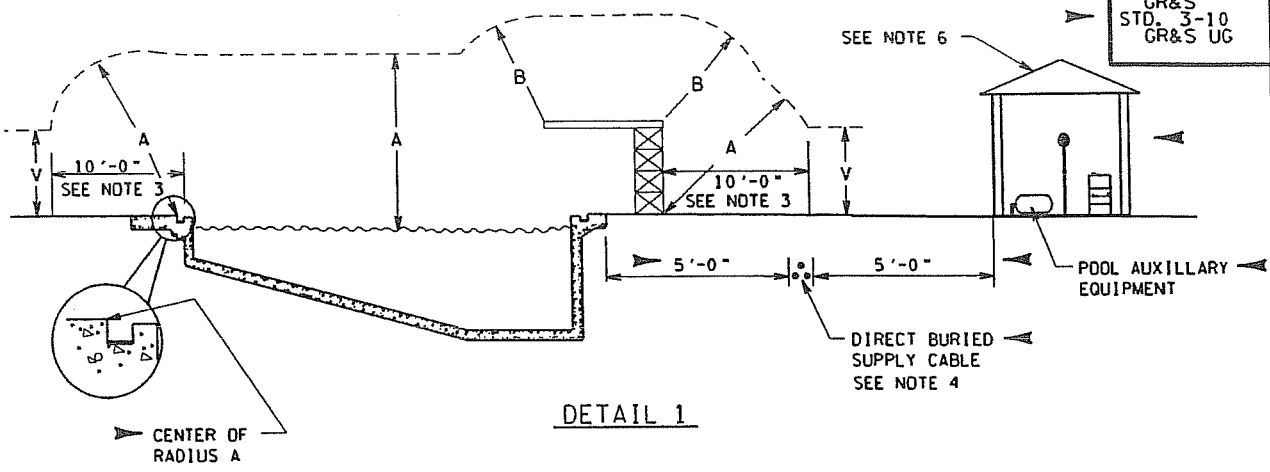


REFERENCES
GR&S
STD. 3-10
GR&S UG



DETAIL 1

TABLE 1

	INSULATED COMMUNICATION CONDUCTORS & CABLES; MESSENGERS; SURGE PROTECTION WIRES; GROUNDED GUYS; UNGROUND GUYS EXPOSED TO 0 TO 300 V; NEUTRAL CONDUCTORS MEETING RULE 230E1;	UNGUARDED RIGID LIVE PARTS, 0 TO 750V; NON-INSULATED COMMUNICATION CONDUCTORS; SUPPLY CABLES OF 0 TO 750 V MEETING RULES 230C2 OR 230C3; UNGROUNDED GUYS EXPOSED TO OPEN SUPPLY CONDUCTORS OF OVER 300 V TO 750 V	SUPPLY CABLES OVER 750 V MEETING RULES 230C2 OR 230C3; OPEN SUPPLY CONDUCTORS, 0 TO 750 V	UNGUARDED RIGID LIVE PARTS, OVER 750 V TO 22 kV; UNGROUND GUYS EXPOSED TO OVER 750 V TO 22 kV	OPEN SUPPLY CONDUCTORS, OVER 750 V TO 22 kV
	(FT)	(FT)	(FT)	(FT)	(FT)
A. CLEARANCE IN ANY DIRECTION FROM THE WATER LEVEL, EDGE OF POOL, BASE OF DIVING PLATFORM, OR ANCHORED RAFT	22.0	22.5	23.0	24.5	25.0
B. CLEARANCE IN ANY DIRECTION TO THE DIVING PLATFORM OR TOWER	14.0	14.5	15.0	16.5	17.0
V. VERTICAL CLEARANCE OVER ADJACENT LAND	CLEARANCE SHALL BE AS REQUIRED BY GR&S STD. 3-4				

NOTE: A, B, AND V ARE SHOWN IN DETAIL 1

NOTES:

- Where wires, conductors, cables, or unguarded rigid live parts are over a swimming pool or the surrounding area, the clearances (with no wind displacement) in any direction shall be not less than those shown in Table 1 and Detail 1.
- These rules do not apply to a pool fully enclosed by a solid or screened permanent structure.
- These rules do not apply to communication conductors and cables, effectively grounded surge-protection wires, neutral conductors, guys and messengers, supply cables of 0 to 750 V meeting Rules 230C2 or 230C3 when these facilities are ten (10) feet or more horizontally from the edge of the pool, diving platform or diving tower.
- Direct buried underground supply cable in PVC schedule DB should not be installed within five (5) feet of swimming pool or its auxiliary equipment. If five (5) feet clearance is not attainable, supplemental mechanical protection shall be provided. Acceptable supplemental protection is rigid galvanized conduit or schedule 40 PVC conduit.
- The Transmission Engineering Department shall be consulted for clearance considerations involving voltages exceeding 22kV to ground. See NESC Rule 234G for clearance adders for voltages above 22 kV to ground.
- See GR&S 3-9

REF. 2007 NESC 234 & 351

7	TOB	7-22-10	BOLDED NOTE 5 FOR CLARITY
6	TOB	5-21-09	REVISED NOTES 1 & 4 AND TITLE BLK., ADDED NOTE 5
5	TOB	5-21-09	MAJOR REVISION TO DETAIL 1
4	TOB	7-26-07	UPDATED THE NESC TO THE 2007 CODE
NO. CH'D	DATE	REVISION	

◀ DENOTES LATEST REVISION

► CLEARANCES REQUIRED FOR
NON-ENCLOSED SWIMMING POOLS,
FOUNTAINS AND SIMILAR INSTALLATIONS

Chip A. Whitworth
MGR, STD'S
APPR. DATE 7-22-10
SUPERSEDES 1-23/5-21-09