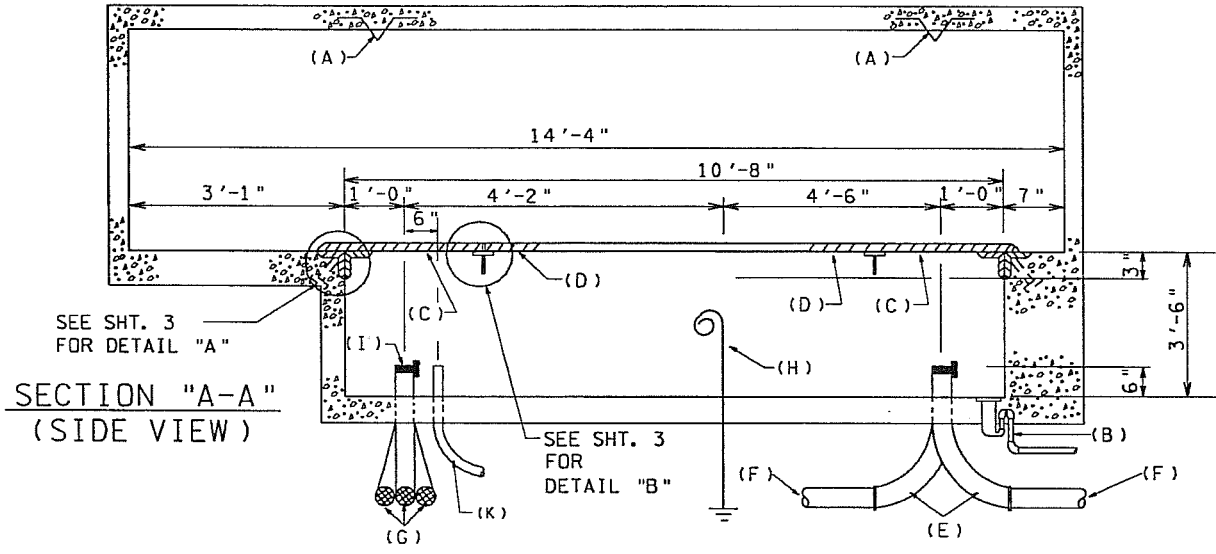


PIT DETAIL (TOP VIEW)



SECTION "A-A"
(SIDE VIEW)

MINIMUM REQUIREMENTS ONLY

CONTRACTUAL AGREEMENTS AND EASEMENTS OUTLINING THE RESPONSIBILITIES OF TAMPA ELECTRIC COMPANY AND THE OWNER WILL ALWAYS BE REQUIRED. IN NO WAY SHALL THIS REQUIREMENT BE CONSTRUED AS AN APPROVED VAULT CONSTRUCTION DESIGN REQUIREMENT UNLESS PRESENTED IN THE FORM OF A CONTRACTUAL AGREEMENT BETWEEN TAMPA ELECTRIC COMPANY AND THE OWNER. TAMPA ELECTRIC COMPANY ASSUMES NO LIABILITY FOR STRUCTURAL DESIGN SPECIFICATIONS OF ANY VAULT.

NO.	CK 'D	DATE	REVISION
3	SJH	5-17-07	REVISED TITLE BLOCK
2	MFK	8-21-03	SPLIT SPEC'S.
1	MFK	4-17-03	MOVED CONDUIT (K),

◀ DENOTES LATEST REVISION

▶ TYPICAL PIT AND CONDUIT DETAIL FOR
600 AMP MANUAL AND AUTO-THROWOVER
PAD-MOUNTED SWITCHING EQUIPMENT VAULT

MGR: STD'S *Bob Shindler*
APPR. DATE 5-17-07
SUPERSEDES 13-23/8-21-03