

POURED IN PLACE

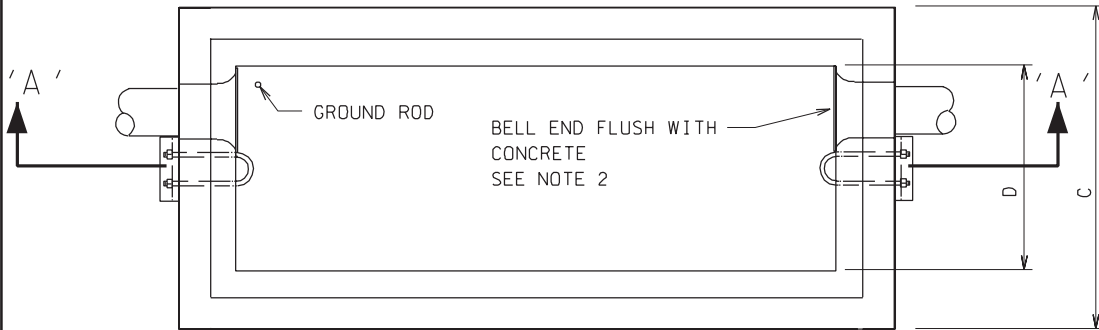
FRAME & COVER TEC NO.	DIMENSIONS				USE OR WIRE SIZE	PULL BOX SIZE	H-5145 REF. SHEET
	A	B	C	D			
5531920	9'-0"	8'-0"	4'-0"	3'-0"	1000 MCM	3' X 8'	2 AND 2A *
5531910	7'-0"	6'-0"	5'-0"	4'-0"	NETWORK	4' X 6'	3 AND 3A
5536000	6'-0"	5'-0"	3'-0"	2'-0"	1/0 AND 4/0	2' X 5'	4 AND 4A *
5531900	4'-0"	3'-0"	3'-0"	2'-0"	HANDHOLE	2' X 3'	5 AND 5A

NOTES:

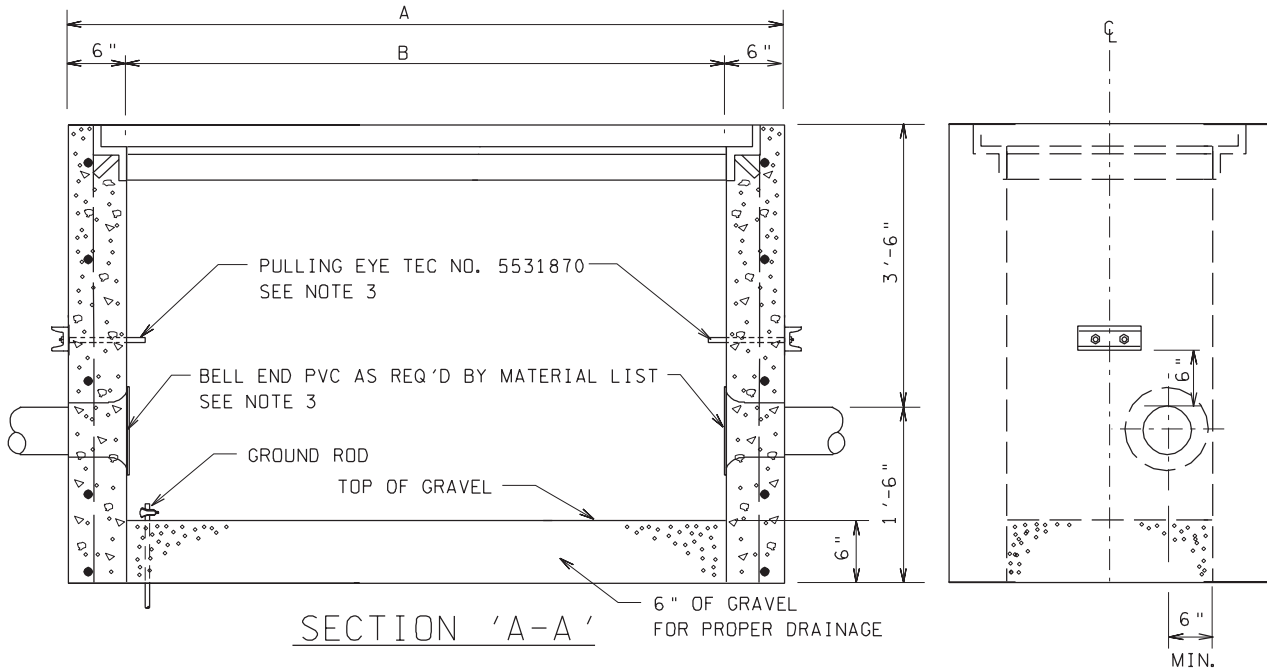
- POURED IN PLACE BOXES SHOULD ONLY BE USED WHEN A PRECAST BOX IS NOT AVAILABLE.
- SEE H-5145 SHEETS 1,2-5,2A-5A FOR FRAME AND COVER CONSTRUCTION DETAILS.
- ENGINEER TO SPECIFY SIZE, NUMBER AND LOCATION OF BELL ENDS.
- INSTALL PULLING EYE ON CENTER LINE OPPOSITE WALL OF BELL ENDS.

* 5. THESE BOXES WILL ACCOMMODATE ONE THREE-PHASE CIRCUIT.

- 6. USE CURB MARKER TEC NO. 5559800 ON CURB TO INDICATE MANHOLE/HANDHOLE LOCATION. CURB MARKERS SHOULD BE INSTALLED USING ADHESIVE TEC NO. 5850570.



PLAN VIEW



SECTION 'A-A'

➤ DENOTES LATEST REVISION

POURED IN PLACE CONCRETE PULLBOX AND
HANDHOLE DESIGN

MGR: STD'S
APPR. DATE 4-16-98
SUPERSEDES 6-1/8-20-87

TAMPA ELECTRIC CO.

STANDARDS

GENERAL RULES & SPECIFICATIONS UG.

6-1