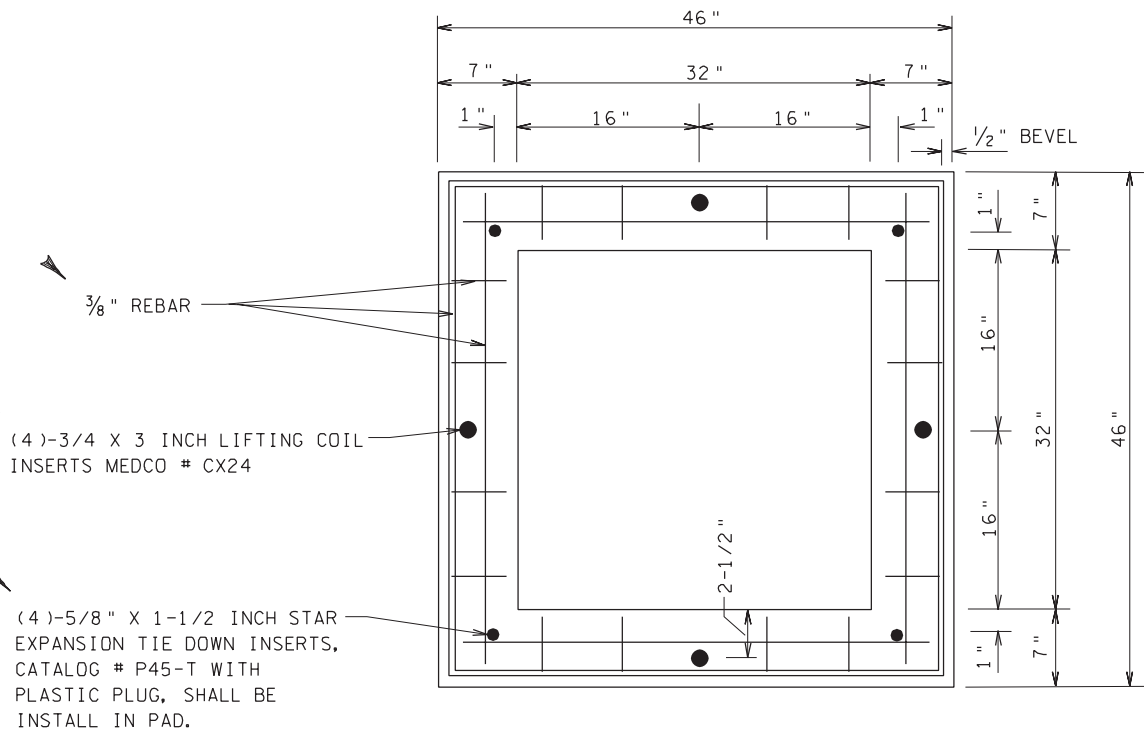


NOTES:

1. IF PRECAST PAD TEC NO. 2001015 IS NOT AVAILABLE USE POURED IN PLACE PAD PER M-DRAWING # M-458.
2. THE COIL INSERTS SHALL BE SET FLUSH OR NO MORE THAN A 1/4" BELOW THE TOP OF THE PAD.
3. JOINTS IN REINFORCING RODS SHALL BE OVERLAPPED AND BOUND WITH WIRE TIES OR WELDED.



3/8" REBAR

(4)-3/4 X 3 INCH LIFTING COIL INSERTS MEDCO # CX24

(4)-5/8" X 1-1/2 INCH STAR EXPANSION TIE DOWN INSERTS, CATALOG # P45-T WITH PLASTIC PLUG, SHALL BE INSTALL IN PAD.

TEC NO. 2001015

◀ DENOTES LATEST REVISION

MGR: STD'S	
APPR. DATE	3-17-94
SUPERSEDES	6-20/10-19-89

PAD DETAIL FOR PAD-MOUNTED SECONDARY TERMINATION CABINET

6-20

TAMPA ELECTRIC CO. STANDARDS GENERAL RULES & SPECIFICATIONS UG.