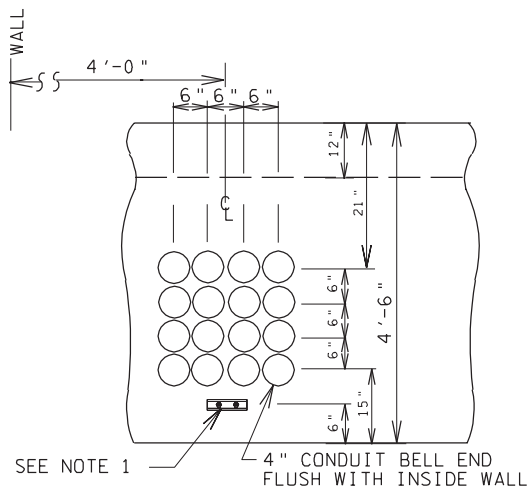
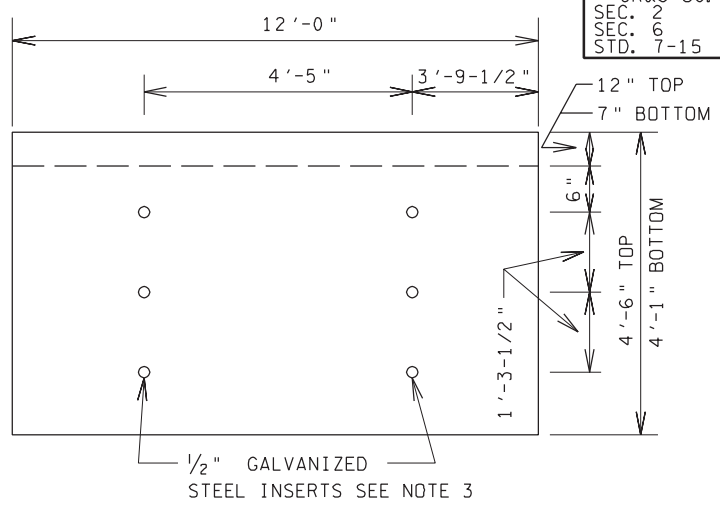


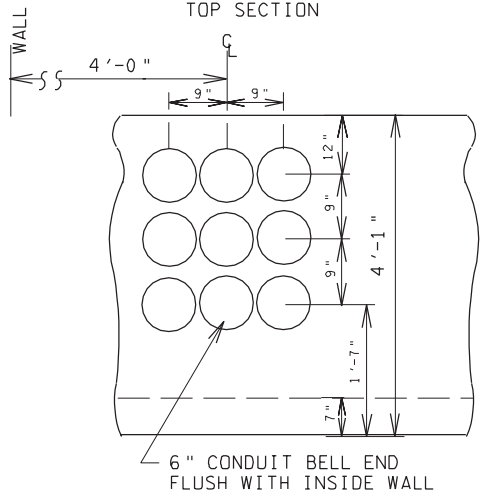
REFERENCES
GR&S UG.
SEC. 2
SEC. 6
STD. 7-15



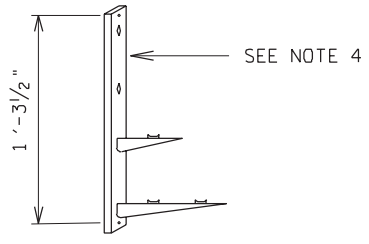
DETAIL "A"  
TOP SECTION



DETAIL "C"  
TYP. TOP OR BOTTOM



DETAIL "B"  
BOTTOM SECTION



DETAIL "B"  
TYPICAL CABLE RACK  
AND SUPPORTS

NOTES:

1. PULLING EYES TEC NO. 5531870 OPPOSITE OF EACH DUCT BANK.
2. A TEMPORARY PULLING EYE WILL BE ATTACHED TO SL LIFTING EYE ANCHOR 5 TON 3/4" X 4-3/4" IN CENTER OF FLOOR. (THIS IS NOT TO BE USED TO LIFT BOX).
3. GALVANIZED STEEL INSERTS ON ALL 12' WALLS FOR CABLE RACKS IN TOP & BOTTOM SECTIONS.
4. USE CABLE RACKS & SUPPORTS AS NEEDED TO SUPPORT/RACK CABLE.
5. H 20 LOAD CLASS
6. ARRANGEMENTS SHALL BE MADE THROUGH A DESIGNATED COORDINATOR IN EACH AREA TO NOTIFY SUPPLIER WHEN AND WHERE TO HAVE BOX SET. IN THE EVENT OF A CHANGE OF PLANS, THE SUPPLIER MUST BE NOTIFIED BY THE DESIGNATED AREA COORDINATOR.
7. SPECIFY TEC NO. 5534600 FOR MANHOLE FRAME AND COVER.
8. A MINIMUM OF (2) TWO AND A MAXIMUM OF (8) EIGHT PRECAST COLLARS, TEC NO. 5534740, SHOULD BE USED WITH EACH PRECAST PULLBOX/SPLICEBOX INSTALLATION.
9. EXCAVATION OF 15'-0" X 11'-0" REQUIRED TO INSTALL MANHOLE.
10. ON SITE CONTRACTOR SHALL INSTALL EXTERNAL DRIVEN GROUNDS, MAKE-UP GROUND WIRE TO DRIVEN RODS, AND INSTALL GROUND WIRE INTO MANHOLE AND SEAL. CONTRACTOR TO MEASURE GROUND EARTH RESISTANCE TO BE 25 OHMS OR LESS.
11. USE CURB MARKER TEC NO. 5559800 ON CURB TO INDICATE MANHOLE/HANDHOLE LOCATION. CURB MARKERS SHOULD BE INSTALLED USING ADHESIVE TEC NO. 5850570.

▲ DENOTES LATEST REVISION

7'-0" HEAD ROOM  
TEC NO. 5534570

8' X 12' X 7'  
"S" TYPE PRECAST MANHOLE

MGR: STD'S	
APPR. DATE	4-16-98
SUPERSEDES	6-2/3-16-95