

REFERENCES	
GR&S UG.	
STD. 1-43	
STD. 1-44	
STD. 1-47	
STD. 6-12	

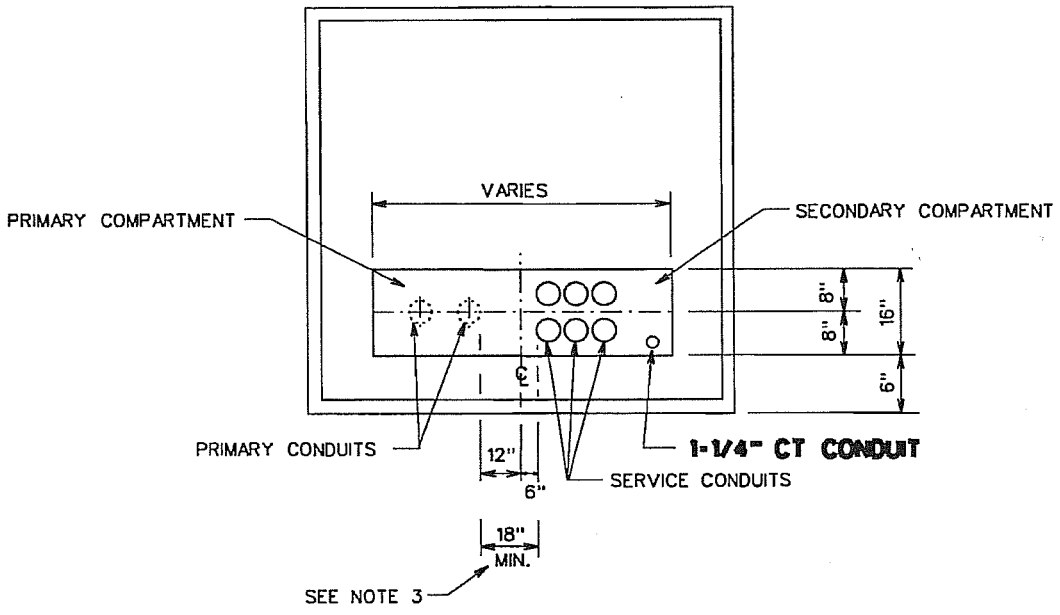


TABLE 1

kVA	MAXIMUM ALLOWED CONDUITS IN SECONDARY COMPARTMENT
75	8
150	8
225	8
300	8
500	8
750	10
1000	10
1500	12
2000	12

ONE ADDITIONAL CONDUIT IS ALLOWED FOR CT WIRING.

NOTES:

1. PRIMARY CONDUIT TO BE CENTERED IN PRIMARY COMPARTMENT.
2. SERVICE CONDUIT TO BE CENTERED IN SECONDARY COMPARTMENT. CUSTOMERS SHOULD RECEIVE APPROPRIATE PAD DETAIL PRIOR TO INSTALLING CONDUIT.
3. PRIMARY & SERVICE CONDUIT TO BE SEPARATED A MINIMUM OF 18".
4. MAXIMUM SECONDARY CONDUITS INCLUDE THOSE REQUIRED FOR TEC USE.
5. YOU MUST OBTAIN STANDARDS APPROVAL TO EXCEED MAXIMUM ALLOWED CONDUITS IN SECONDARY COMPARTMENT.
6. FINISHED GRADE MARK TO BE NOTED ON PRIMARY CONDUIT WITH BLACK MARKER.

NO.	CK'D	DATE	REVISION
3			
2	MFK	8-18-05	ADDED NOTE 6, REVISED REFERENCE BLOCK
1	MFK	7-22-04	TABLE REVISED, NEW NOTE 4, RENUMBERED NOTE 4 TO 5

◀ DENOTES LATEST REVISION

D.S. SUPR. *Bob Shindler*  
 APPR. DATE 8-18-05  
 SUPERSEDES 7-16/7-22-04

# CONDUIT DETAIL FOR THREE-PHASE PAD-MOUNTED TRANSFORMER

7-16