

## Reliable electricity with a focus on the environment

Tampa Electric's emissions reduction achievements have helped make us one of the nation's cleanest utilities utilizing coal. It's the result of always striving to improve the way we balance the need to continually generate reliable electric power with protection of the environment. We also give our customers options to work for the environment through initiatives like our Renewable Energy program (for more on how your participation can make a difference, see page 2).

Central to our overall environmental effort is our \$1.2 billion program to reduce emissions across our generating fleet. As of December 31, 2007, Tampa Electric has reduced its five major types of air emissions overall compared to 1998 levels: sulfur dioxide by 93 percent; nitrogen oxide by 60 percent; particulate matter by more than 70 percent; mercury by more than 70 percent; and carbon dioxide by 20 percent.

By repowering H.L. Culbreath Bayside Power Station in 2004 with clean-burning natural gas, we've reduced the station's nitrogen oxides and sulfur dioxide emissions by approximately 99 percent to date. Particulate matter emissions there have decreased by more than 93 percent from 1998 levels.

Our Polk Power Station's Unit 1 holds a special designation: world leader in the production of electricity from integrated gasification combined cycle technology, or IGCC. IGCC takes low-cost carbon-based fuels, such as coal and petroleum coke, and through a special chemical process, converts them into a clean-burning gas. In 2005, Polk Power Station was named the cleanest coal-fired power plant in North America by an independent Canadian research firm that studied more than 400 plants.

Our environmental effort is also making big strides at Big Bend Power Station in Apollo Beach.

In May, Tampa Electric plans to complete Selective Catalytic Reduction (SCR) equipment installation at the second of Big Bend's four units. SCR technology, the best available nitrogen oxide emissions control technology in the industry, works much like a car's catalytic converter. SCR uses ammonia to convert nitrogen oxide at the station to clean, elemental nitrogen and water.

In June 2007, SCR installation at Big Bend Unit 4 was completed. Tampa Electric plans to complete SCR installation at Big Bend Unit 2 by May 2009, followed by Unit 1 in May 2010. When fully installed, SCR will reduce Big Bend Power Station's nitrogen oxides emissions by approximately 85 percent from 1998 emission levels.

[»» Learn More ««](#)

[tampaelectric.com/environmental](http://tampaelectric.com/environmental)

## Tampa Electric's Candy Corona puts his heart into his work

Among his charitable work for the United Way, Big Brothers Big Sisters and others, **Candido “Candy” Corona**, lead mechanic at our Eastern Service Area garage, helps organize the Paint Your Heart Out, Tampa! effort. He coordinates paint distribution for about 3,000 volunteers who, each April, paint the homes of low-income, elderly citizens throughout Tampa.



In 2004, President George W. Bush thanked Corona for his work with Paint Your Heart Out, Tampa! Corona was also recognized for his community commitment in the City of Tampa's “I am Tampa” advertising campaign.

Corona says the best part of working with Paint Your Heart Out, Tampa! is seeing the smiles of those the volunteers help. “In one day, we can turn a home in need of paint into the best-looking house on the block,” he said. “Bringing some joy to the residents makes it all worth it.”

## Choose Renewable Energy: partner with us to benefit the environment

Tampa Electric is dedicated to generating reliable electricity with environmental responsibility. Because we know working for the environment is a communitywide effort, we make it easy for our customers to help through our Renewable Energy program.

The program uses renewable resources such as sunlight and biomass (plant materials) as fuels to produce electricity. When you sign up for a “block” subscription in the Renewable Energy program (available for only \$5 per block per month, conveniently added to your electric bill), you're supporting the equivalent of 200 kilowatt-hours of electricity on the electric grid.

Here's what your participation can mean in a year's time:

- One block offsets two tons (4,000 pounds) of carbon dioxide (CO<sub>2</sub>).
- Three blocks offset the same

amount of CO<sub>2</sub> as planting an acre and a half of trees.

- Four blocks offset the same amount of CO<sub>2</sub> as not driving an average passenger car for one year.

Tampa Electric's recent Renewable Energy investments include the 60-panel solar array at Middleton High School in Tampa. A magnet school for math, science, engineering and technology, Middleton hosts the system as part of its curriculum. In case of a natural disaster or other emergency, the 10,500-watt system also will provide supplemental power for the Red Cross shelter located at the school.

Visit us online to see our other solar arrays in the community, learn more about the program and find out how your participation can make a difference for the environment.

[»» Learn More ««](#)

[tampaelectric.com/environmental](http://tampaelectric.com/environmental)

## A new community center in Apollo Beach

At Tampa Electric, we believe it's part of our corporate responsibility to enhance economic development in the communities we serve. On February 28, we joined other business partners to dedicate the South Shore Community Events Center in Apollo Beach.

A multi-use community events facility, the South Shore Community Events Center is located south of Tampa Electric's Manatee Viewing Center and Big Bend Power



*Future plans for the South Shore Community Event Center include a boardwalk connecting it to the Manatee Viewing Center, which is located adjacent to Big Bend Power Station.*

Station. The facility features two covered pavilions, each 40 feet by 100 feet, and a performance stage. Designed for a wide range of Apollo Beach and South Shore community-sponsored events, in March the facility hosted the Apollo Beach Manatee Festival of the Arts, an annual celebration of crafts, art and entertainment.

With a focus on the environment, the South Shore Community Events Center has table tops made from 100 percent recycled materials, native Florida plants that need no extra watering and other "green" features.

Tampa Electric's Facility Services Department will manage and operate the South Shore Community

Events Center. Playing a big role in the center's development were the contributions of the Big Bend Power Station Selective

Catalytic Reduction (SCR) project team, contractors and suppliers, who provided donations and volunteer hours. See the cover story for more information on the SCR project and how it's an important part of our \$1.2 billion environmental improvement plan.

### COMMUNITY

#### 13th Annual LifePath Hospice Golf Tournament

Emerald Greens Golf and Country Club

Monday, May 5, 2008 – Noon shotgun start

For more information, call **813-877-2200** or e-mail [development@lifepath-hospice.org](mailto:development@lifepath-hospice.org)

### WELLNESS TIP

Eliminate a 150-calorie soda daily to lose approximately 10 pounds over a year's time.

Source: U.S. Department of Health & Human Services, [surgeongeneral.gov](http://surgeongeneral.gov)

To search for job openings, visit [tecoenergy.com](http://tecoenergy.com) and click *Careers*.

#### We're here to serve you:

Remember, you can handle almost all your account needs and hear a list of payment agencies by using our automated phone system. Just follow the voice options when you call – it's easy.

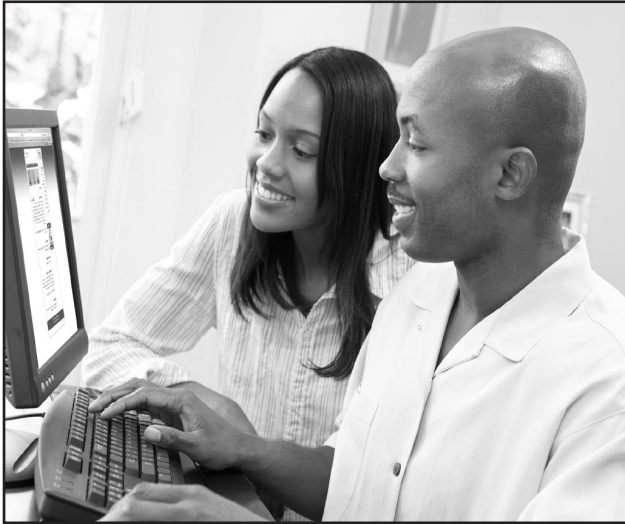
#### Customer Care:

Hillsborough: 813-223-0800  
Polk: 863-299-0800  
Others: 1-888-223-0800

#### Power Outages: 1-877-588-1010

*Open Lines* is also available online at [tampaelectric.com](http://tampaelectric.com). All offers are redeemable with a printed copy of this issue.

Tampa Electric is an Equal Opportunity Company. All rights reserved.



## MORE THAN JUST EASY – E-BILL IS ENVIRONMENTALLY FRIENDLY!

Make a choice that reduces paper consumption by signing up for e-Bill at [tampaelectric.com](http://tampaelectric.com). Because e-Bill saves a paper bill from being printed, you help save resources.

What else makes Tampa Electric's e-Bill right for you?

- It's free!
- Schedule automatic payments
- Make multiple payments
- See your bill online
- Get monthly e-mail notifications
- Receive payment reminders

LIFE RUNS ON ENERGY<sup>SM</sup>  
[tampaelectric.com](http://tampaelectric.com)



## Working with the Community to Keep Our Streets Bright

At Tampa Electric, we're working with our customers and the community to help ensure malfunctioning lights are working again as quickly as possible. How can you help? Simple.

If you see a malfunctioning streetlight:

- Write down the six- or 10-digit light ID tag number on the light pole, or write down the nearest street address or intersection to the light.
- Go online to the convenient *Lights Out* form on [tampaelectric.com](http://tampaelectric.com)
- Call: **813-223-0800** (in Hillsborough County), **863-299-0800** (in Polk County) or **1-888-223-0800** (outside of Hillsborough or Polk counties). *Press option 4 for streetlights.*

When you report a malfunctioning streetlight, it is important that you provide the location of the streetlight so that technicians are sent to the correct location, and that you provide your contact information so that we may acknowledge your request.

By working together, we can all help keep our streets bright.



LIFE RUNS ON ENERGY<sup>SM</sup>  
[tampaelectric.com](http://tampaelectric.com)

