

NOTES:

1. CUSTOMERS CONSIDERING INTERCONNECTION WITH NET METERING TO A RENEWABLE ENERGY SYSTEM, WHETHER IT'S NEW, RENEWABLE/BATTERY COMBO, ADDITIONAL PANELS, ADDITIONAL PANELS W/ BATTERY OR BATTERY ONLY, MUST COMPLETE ALL OF THE BELOW BUT NOT LIMITED TO:
 - a. APPLICABLE ENROLLMENT APPLICATION
 - b. APPLICABLE TIER INTERCONNECTION AGREEMENT
 - c. ENGINEERED ONE-LINE DIAGRAM IN PDF FORMAT, HAND DRAWN OR PHOTOGRAPH OF ONE-LINE WILL NOT BE ACCEPTED.
 - d. COPY OF AHJ APPROVED ELECTRICAL PERMIT
 - e. APPLICABLE INSURANCE REQUIREMENT
 - f. PHOTO OF EACH DISCONNECT, CLOSE ENOUGH TO READ PLACARDING AND FAR ENOUGH TO UNDERSTAND PIPING.
 - g. PHOTO OF WALL/PULLBACK TO SHOW ENTIRE BUILD. MUST INCLUDE METER CAN AND ALL DISCONNECTS TOGETHER IN ONE PHOTO.
2. CUSTOMERS/CONTRACTORS MUST AGREE TO THESE MOST CURRENT 'STANDARD ELECTRICAL SERVICE REQUIREMENTS' SPECIFICATION 7.52 PAGES 1-6.
3. A MANUAL LOAD BREAK DISCONNECT SWITCH PROVIDING A LOCKABLE VISIBLE BREAK SEPARATION BETWEEN THE UTILITY POWER GRID AND THE AC POWER OUTPUT OF THE RENEWABLE GENERATOR SYSTEM (RGS) OR ENERGY STORAGE SYSTEM (ESS) SHALL BE PROVIDED BY THE CUSTOMER. A CIRCUIT BREAKER, MOLDED CASE SWITCH OR PUSH STOP BUTTON TYPE DOES NOT PROVIDE A VISIBLE BREAK AND SHALL NOT BE ACCEPTABLE. THE CUSTOMER PROVIDED UTILITY DISCONNECT SWITCH SHALL BE MOUNTED ADJACENT TO THE UTILITY METER SOCKET ENCLOSURE WITHIN A MAXIMUM DISTANCE OF 6 FEET, IN THE LINE OF SIGHT, AND SHALL MEET THE ACCESSIBILITY REQUIREMENTS SPECIFIED IN SESR SECTION VI E, FOR METERING EQUIPMENT. THE CENTERLINE OF THE THROWABLE HANDLE OF DISCONNECT SHALL BE MOUNTED 4'-6" TO 5' FROM FINAL GRADE. IF THE MAXIMUM DISTANCE OF 6 FEET & IN THE LINE OF SIGHT CANNOT BE OBTAINED, PERMISSION MUST BE REQUESTED THROUGH TAMPA ELECTRIC PRIOR TO INSTALLATION.
4. THE DISCONNECT SHALL BE PROPERLY GROUNDED PER NEC AHJ REQUIREMENTS.
5. THE FRONT COVER OF THE CUSTOMER PROVIDED UTILITY DISCONNECT SWITCH SHALL CONTAIN A PLACARD IDENTIFYING THE PRESENCE OF AN ON-SITE POWER GENERATION SOURCE. SEE DETAIL "J". A PLACARD SHALL BE, WHITE LETTERING, RED BACKGROUND, PERMANENT, DURABLE, NON-FERROUS METAL OR POLY-PLASTIC PLATES, ENGRAVED OR STAMPED LETTERING MINIMUM ¼" HIGH, UV RESISTANT, EPOXY GLUED OR RIVETED. DUPLICATION, USE OF PEEL-AND-STICK LABELS, PAINT, MARKING PENS, OR SCRATCHING TO LABEL THE PLACARDS IS NOT ACCEPTABLE.
6. MULTIPLE DISCONNECTS - WHEN MULTIPLE DISCONNECTS ARE REQUIRED; PLACARDS SHALL BE NUMBERED SEQUENTIALLY TO THE TOTAL NUMBER OF DISCONNECTS REQUIRED FOR ISOLATION, EX: 1 OF 2, 2 OF 2 OR 1 OF 3, 2 OF 3, 3 OF 3, ETC. DUPLICATION OF PLACARDING IS NOT ACCEPTABLE ON ANY SINGLE DISCONNECT.
7. IN-LINE (IN SERIES) DISCONNECTS - WHEN PLACARDING IN-LINE (IN SERIES) DISCONNECTS - PLEASE ONLY PLACARD THE FURTHEST UPSTREAM (TOWARDS THE UTILITY) DISCONNECT, WITH THE SECOND DISCONNECT DOWNSTREAM NOT REQUIRING TECO APPROVED PLACARDING.
8. APPROVED METER CAN VARIANCE PLACARD - WHEN APPROVED: A METER CAN VARIANCE PLACARD SHALL STATE WHEN FACING THE METER CAN, THE DISTANCE (FEET) AND THE DIRECTION (RIGHT/LEFT/BEHIND) TO EACH DISCONNECT. THE USE OF NORTH, SOUTH, EAST OR WEST IS NOT ACCEPTABLE. METER CAN VARIANCE PLACARD SHALL ADHERE TO NOTE 5.
9. NO ALTERATIONS TO THE STANDARD LINE/LOAD TERMINATIONS AS WELL AS NO SPLICES/JUNCTIONS SHALL BE MADE IN ANY METERING ENCLOSURE, NOR SHALL THE ENCLOSURE BE USED AS A RACEWAY. RACEWAYS IN OTHER APPARATUSES SHALL BE KEPT TO A MINIMUM THROUGHOUT CONSTRUCTION.
10. CURRENT CUSTOMER/INSTALLER OF RECORD SHALL BE RESPONSIBLE FOR ANY AND ALL DEFICIENCIES, PAST & CURRENT CONSTRUCTION, RELATED TO SERVICE ENTRANCES & CURRENT RGS OR ESS PROJECT.
11. OPERATING THE RGS OR ESS BEFORE PERMISSION TO OPERATE (PTO) IS ISSUED IS PROHIBITED. IF A SYSTEM IS OPERATION WITHOUT PTO, SERVICE DISCONNECTION MAY OCCUR.
12. ELECTRIC VEHICLES (EV'S) SHALL BE CONSIDERED A STANDARD ESS AND WILL BE REQUIRED TO BE CONNECTED ELECTRICALLY BEHIND A DISCONNECT.
13. MAP PLACARDS - WHEN APPROVED, MAP PLACARDS SHALL NOT REPLACE THE METER CAN VARIANCE AND/OR DISCONNECT LOCATION PLACARD. GENERAL DISCUSSIONS WITH TAMPA ELECTRIC WILL BE NEEDED TO DETERMINE WHERE AND WHEN MAP PLACARDS ARE TO BE INSTALLED.

◀ DENOTES LATEST REVISION

RENEWABLE GENERATION SYSTEM (RGS) & ENERGY STORAGE SYSTEM (ESS) UTILITY DISCONNECT REQUIREMENTS

**TAMPA
ELECTRIC
COMPANY**

**STANDARD ELECTRICAL
SERVICE REQUIREMENTS**

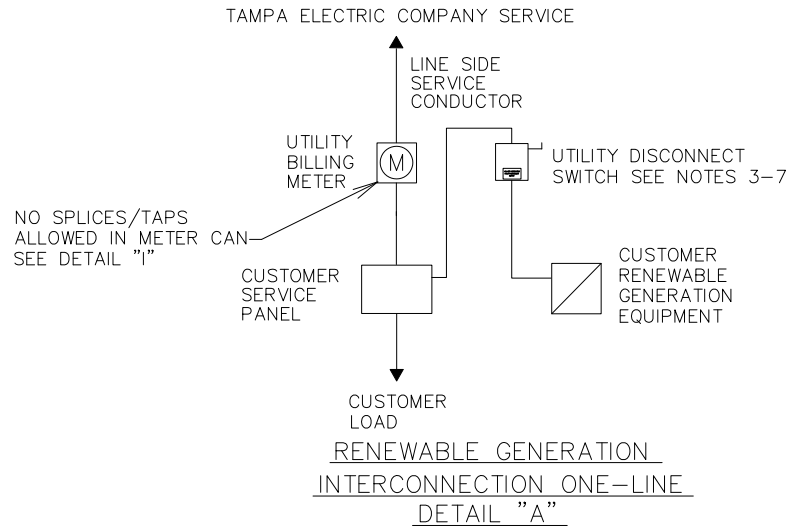
DISTRIBUTION ENGINEERING
2200 E. SLIGH AVE
TAMPA FL. 33610
PH. - (813) 275-3053

DATE EFFECTIVE: 7-21-25

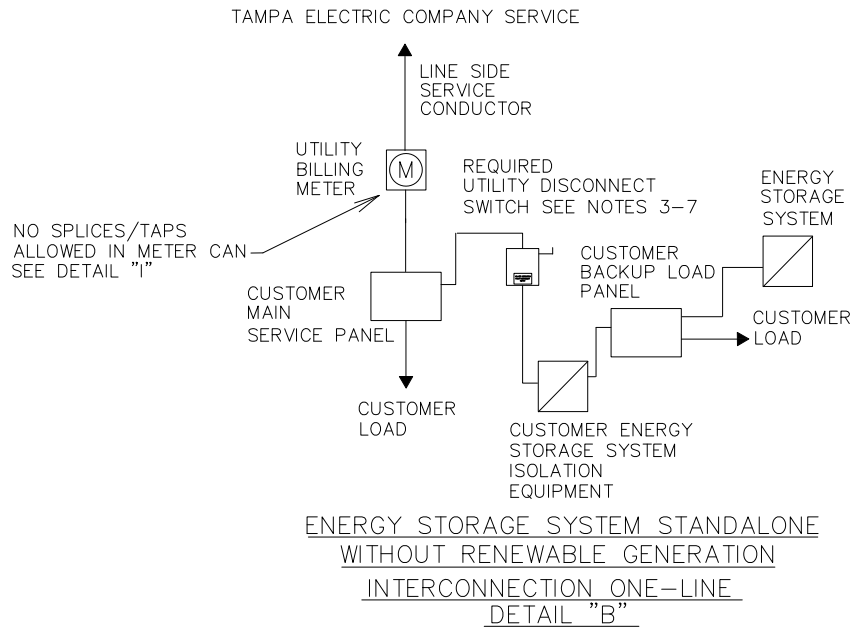
7.52

PAGE 1 OF 6

RGS ONLY



ESS (BATTERY) ONLY



◀ DENOTES LATEST REVISION

RENEWABLE GENERATION SYSTEM (RGS) & ENERGY STORAGE SYSTEM (ESS) UTILITY DISCONNECT REQUIREMENTS

TAMPA
ELECTRIC
COMPANY

STANDARD ELECTRICAL
SERVICE REQUIREMENTS

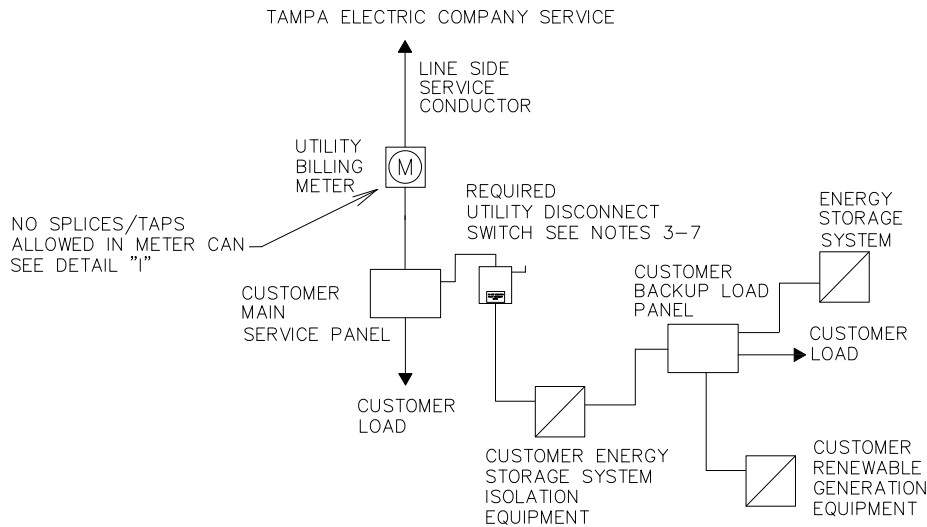
DISTRIBUTION ENGINEERING
2200 E. SLIGH AVE
TAMPA FL. 33610
PH. - (813) 275-3053

DATE EFFECTIVE: 7-21-25

7.52

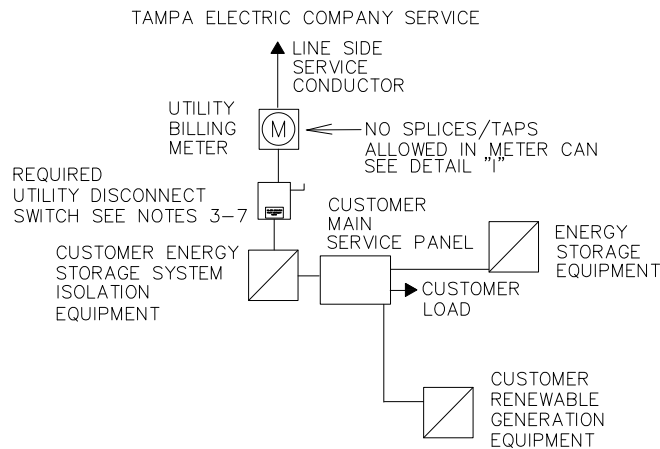
PAGE 2 OF 6

RGS/ESS COMBO



ENERGY STORAGE SYSTEM NEW INSTALLATION WITH NEW RENEWABLE GENERATION INTERCONNECTION ONE-LINE DETAIL "C"

RGS/ESS COMBO WHOLE HOME



ENERGY STORAGE SYSTEM OR RENEWABLE GENERATION CONNECTED TO MAIN PANEL INTERCONNECTION ONE-LINE DETAIL "D"

▲ DENOTES LATEST REVISION

RENEWABLE GENERATION SYSTEM (RGS) & ENERGY STORAGE SYSTEM (ESS) UTILITY DISCONNECT REQUIREMENTS

**TAMPA
ELECTRIC
COMPANY**

**STANDARD ELECTRICAL
SERVICE REQUIREMENTS**

DISTRIBUTION ENGINEERING
2200 E. SLIGH AVE
TAMPA FL. 33610
PH. - (813) 275-3053

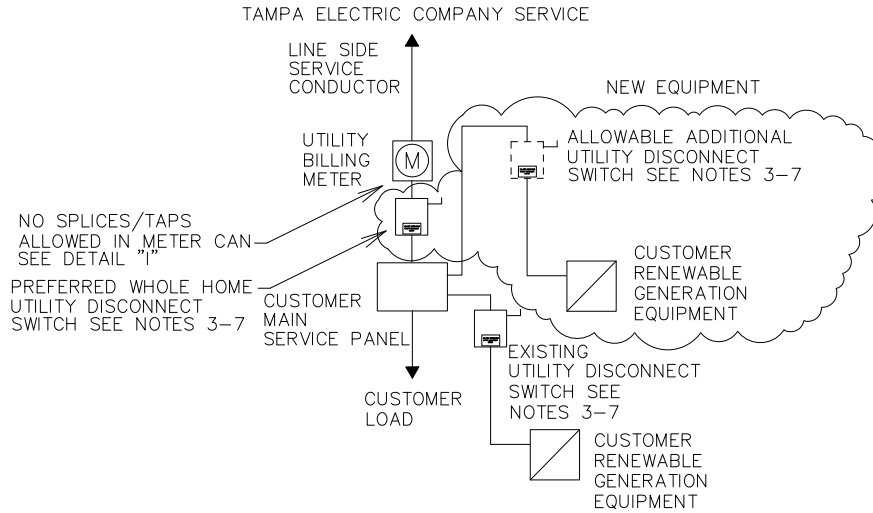
DATE EFFECTIVE: 7-21-25

7.52

PAGE 3 OF 6

RGS W/ RGS ADD-ON

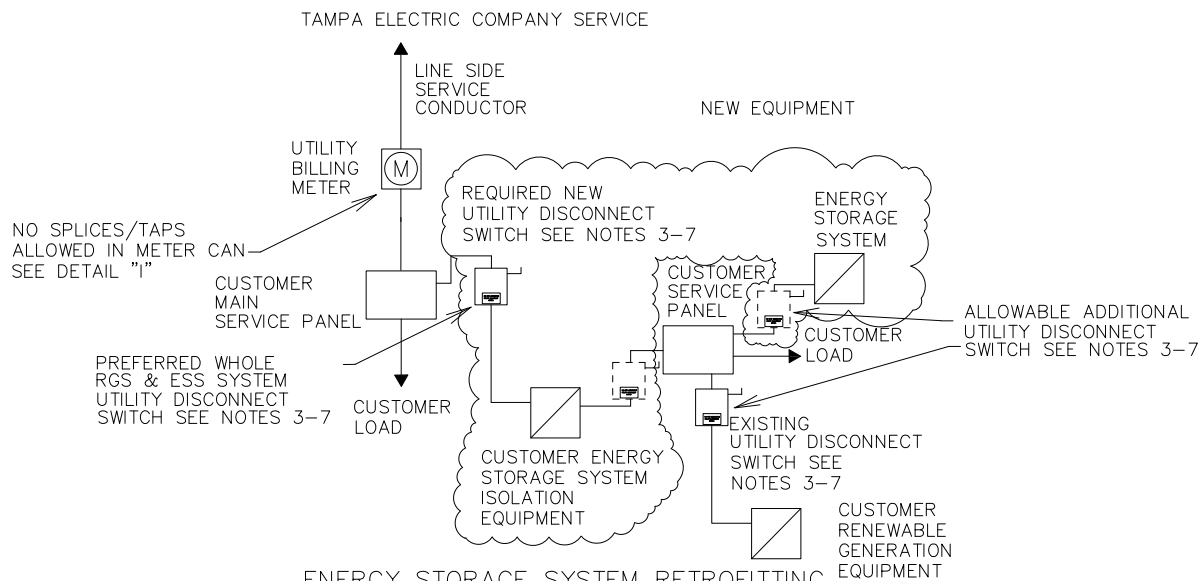
SEE NOTE 10



ENERGY STORAGE SYSTEM RETROFITTING TO EXISTING RENEWABLE GENERATION INTERCONNECTION ONE-LINE DETAIL "E"

RGS W/ ESS ADD-ON

SEE NOTE 10



ENERGY STORAGE SYSTEM RETROFITTING TO EXISTING RENEWABLE GENERATION INTERCONNECTION ONE-LINE DETAIL "F"

◀ DENOTES LATEST REVISION

RENEWABLE GENERATION SYSTEM (RGS) & ENERGY STORAGE SYSTEM (ESS) UTILITY DISCONNECT REQUIREMENTS

TAMPA
ELECTRIC
COMPANY

STANDARD ELECTRICAL
SERVICE REQUIREMENTS

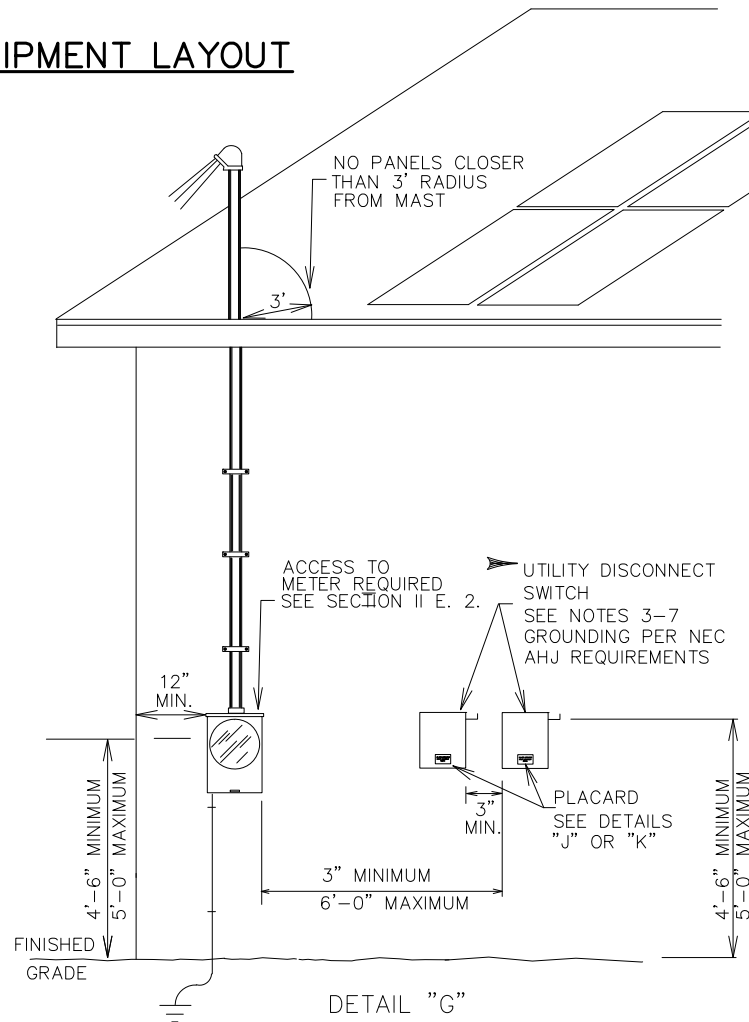
DISTRIBUTION ENGINEERING
2200 E. SLIGH AVE
TAMPA FL. 33610
PH. - (813) 275-3053

DATE EFFECTIVE: 7-21-25

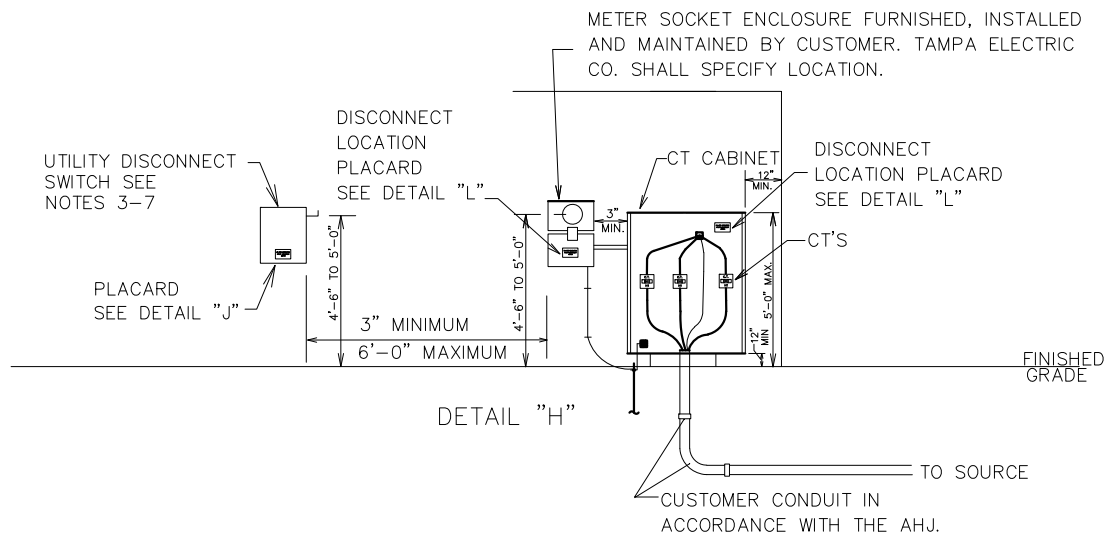
7.52

▶ PAGE 4 OF 6

EQUIPMENT LAYOUT



CT SERVICE EQUIPMENT LAYOUT



◀ DENOTES LATEST REVISION

RENEWABLE GENERATION SYSTEM (RGS) & ENERGY STORAGE SYSTEM (ESS) UTILITY DISCONNECT REQUIREMENTS

TAMPA
ELECTRIC
COMPANY

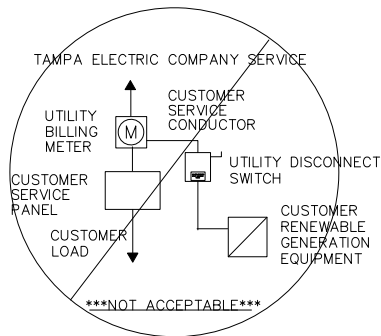
STANDARD ELECTRICAL
SERVICE REQUIREMENTS

DISTRIBUTION ENGINEERING
2200 E. SLIGH AVE
TAMPA FL. 33610
PH. - (813) 275-3053

DATE EFFECTIVE: 7-21-25

7.52

PAGE 5 OF 6



NOTE: CONNECTION TO METER CAN IN ANY CONFIGURATION IS NOT ACCEPTABLE VIA TAPS OR ALTERATIONS. SEE NOTE 9
DETAIL "I"

TYPICAL RGS/ESS PLACARD



SEE NOTES 5 & 7
DETAIL "J"

TYPICAL RGS/ESS MULTIPLE DISCONNECT PLACARDING



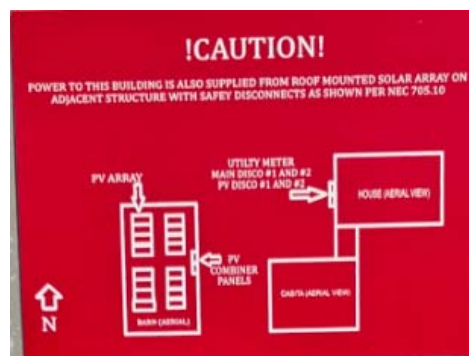
SEE NOTES 5 & 6
DETAIL "K"

METER CAN VARIANCE AND/OR DISCONNECT LOCATION PLACARD



SUBJECT TO PRE-APPROVAL BY TAMPA ELECTRIC. SEE NOTES 5 & 8
DETAIL "L"

DISCONNECT LOCATION MAP PLACARD



SUBJECT TO PRE-APPROVAL BY TAMPA ELECTRIC. SEE NOTE 13
DETAIL "M"

◀ DENOTES LATEST REVISION

RENEWABLE GENERATION SYSTEM (RGS) & ENERGY STORAGE SYSTEM (ESS) UTILITY DISCONNECT REQUIREMENTS

TAMPA
ELECTRIC
COMPANY

STANDARD ELECTRICAL
SERVICE REQUIREMENTS

DISTRIBUTION ENGINEERING
2200 E. SLIGH AVE
TAMPA FL. 33610
PH. - (813) 275-3053

DATE EFFECTIVE: 7-21-25

7.52

▶ PAGE 6 OF 6