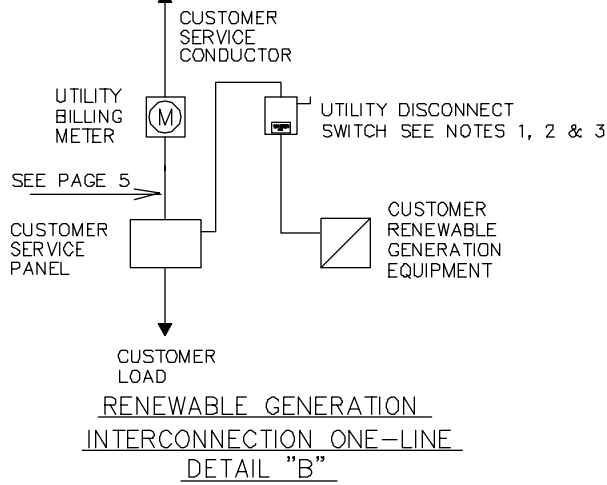
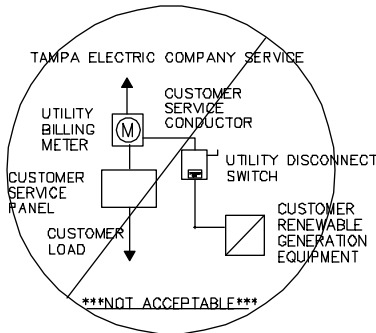


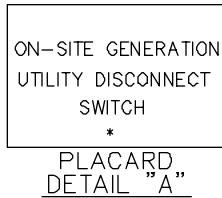
TAMPA ELECTRIC COMPANY SERVICE



RENEWABLE GENERATION
INTERCONNECTION ONE-LINE
DETAIL "B"



NOTE: CONNECTION TO METER CAN IN ANY CONFIGURATION IS NOT ACCEPTABLE

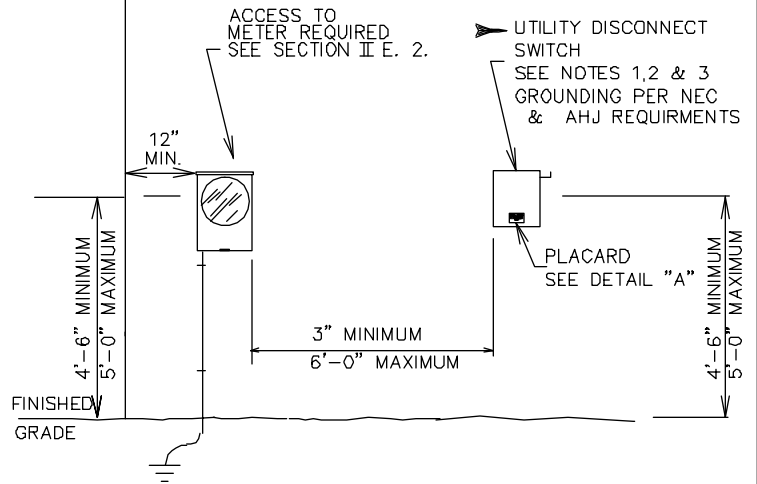


*WHERE MULTIPLE DISCONNECTS EXIST, EACH MUST BE NUMBERED ACCORDINGLY. EXAMPLE: 10F2. METER CAN MUST BE LABELED TO INDICATE TOTAL.

NOTES:

- 1. A MANUAL LOAD BREAK DISCONNECT SWITCH PROVIDING A LOCKABLE VISIBLE BREAK SEPARATION BETWEEN THE UTILITY POWER AND THE AC POWER OUTPUT OF THE RENEWABLE GENERATOR SYSTEM (RGS) SHALL BE PROVIDED. A CIRCUIT BREAKER OR MOLDED CASE SWITCH DOES NOT PROVIDE AN ACCEPTABLE VISIBLE BREAK AND IS NOT ACCEPTABLE. THE UTILITY DISCONNECT SWITCH SHALL BE MOUNTED ADJACENT TO THE UTILITY METER SOCKET ENCLOSURE WITHIN A 6'-0" MAXIMUM DISTANCE, WITHIN LINE OF SIGHT, AND SHALL MEET THE ACCESSIBILITY REQUIREMENTS SPECIFIED IN SESR SECTION VI E FOR METERING EQUIPMENT.
2. THE FRONT COVER OF THE UTILITY DISCONNECT SWITCH SHALL CONTAIN A PLACARD IDENTIFYING THE ON-SITE POWER GENERATION SOURCE. SEE DETAIL "A".
3. THE PERMANENT AND DURABLE PLACARD SHALL BE NON-FERROUS METAL OR POLY-PLASTIC PLATES, UV RESISTANT, EPOXY GLUED OR RIVETED TO THE FRONT COVER OF THE DISCONNECT SWITCH WITH ENGRAVED OR STAMPED LETTERING A MINIMUM OF 1/4" HIGH, WHITE LETTERS ON A RED BACKGROUND. THE USE OF PEEL-AND-STICK LABELS, PAINT, OR MARKING PENS TO LABEL THE PLATES IS NOT ACCEPTABLE.
4. CUSTOMERS CONSIDERING INTERCONNECTION WITH NET METERING TO A RENEWABLE ENERGY SYSTEM INSTALLED AT THEIR SITE MUST COMPLETE THE APPLICATION, INTERCONNECTION AGREEMENT AND OTHER REQUIRED DOCUMENTATION AND FORWARD THEM TO TAMPA ELECTRIC CO. EARLY IN THE DESIGN PROCESS. DISCONNECT SWITCH MUST BE INSPECTED AND APPROVED BY TAMPA ELECTRIC CO. PRIOR TO PLACING SYSTEM IN SERVICE.
5. IF MORE THAN ONE TAMPA ELECTRIC BILLING METER IS LOCATED ON THE BUILDING, INSTALL A PLACARD ON THE METER AHEAD OF THE RENEWABLE ENERGY SYSTEM STATING "ON-SITE GENERATION". SEE NOTE 3 FOR PLACARD REQUIREMENTS.

➤ DENOTES LATEST REVISION



RENEWABLE GENERATION SYSTEM UTILITY DISCONNECT REQUIREMENTS

TAMPA
ELECTRIC
COMPANY

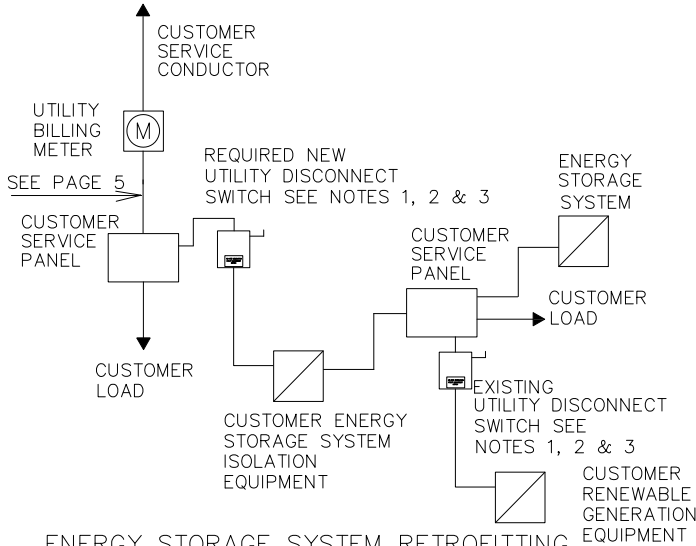
STANDARD ELECTRICAL
SERVICE REQUIREMENTS

DISTRIBUTION ENGINEERING
2200 E. SLIGH AVE
TAMPA FL. 33610
PH. - (813) 275-3053

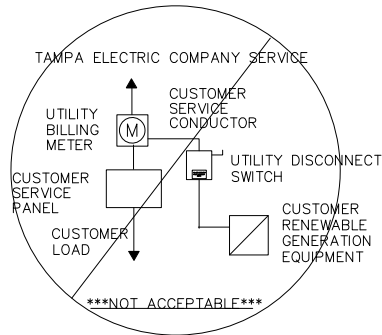
7.52

DATE EFFECTIVE: 8-19-22

PAGE 1 OF 5



ENERGY STORAGE SYSTEM RETROFITTING TO EXISTING RENEWABLE GENERATION INTERCONNECTION ONE-LINE DETAIL "C"

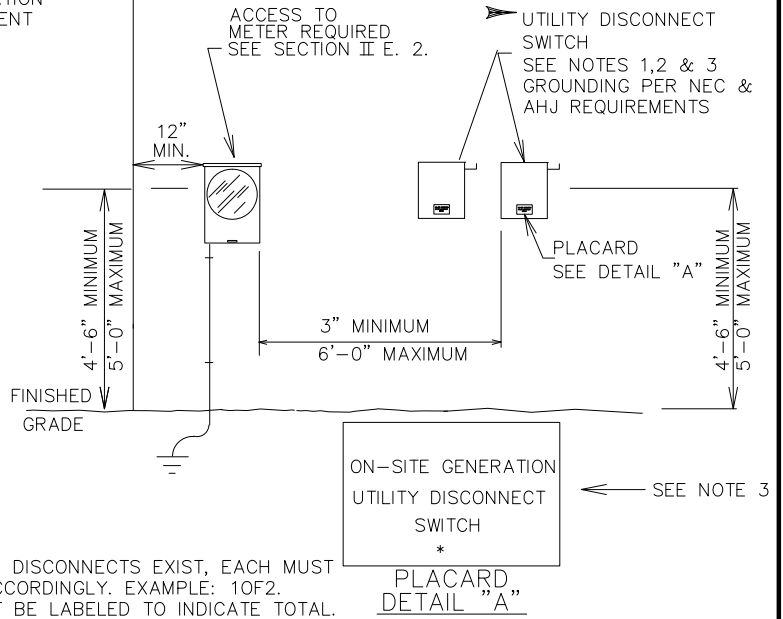


NOTE: CONNECTION TO METER CAN IN ANY CONFIGURATION IS NOT ACCEPTABLE

NOTES:

1. A MANUAL LOAD BREAK DISCONNECT SWITCH PROVIDING A LOCKABLE VISIBLE BREAK SEPARATION BETWEEN THE UTILITY POWER AND THE AC POWER OUTPUT OF THE RENEWABLE GENERATOR SYSTEM (RGS) SHALL BE PROVIDED. A CIRCUIT BREAKER OR MOLDED CASE SWITCH DOES NOT PROVIDE AN ACCEPTABLE VISIBLE BREAK AND IS NOT ACCEPTABLE. THE UTILITY DISCONNECT SWITCH SHALL BE MOUNTED ADJACENT TO THE UTILITY METER SOCKET ENCLOSURE WITHIN A 6'-0" MAXIMUM DISTANCE, WITHIN LINE OF SIGHT, AND SHALL MEET THE ACCESSIBILITY REQUIREMENTS SPECIFIED IN SESR SECTION VI E FOR METERING EQUIPMENT.
2. THE FRONT COVER OF THE UTILITY DISCONNECT SWITCH SHALL CONTAIN A PLACARD IDENTIFYING THE ON-SITE POWER GENERATION SOURCE. SEE DETAIL "A".
3. THE PERMANENT AND DURABLE PLACARD SHALL BE NON-FERROUS METAL OR POLY-PLASTIC PLATES, UV RESISTANT, EPOXY GLUED OR RIVETED TO THE FRONT COVER OF THE DISCONNECT SWITCH WITH ENGRAVED OR STAMPED LETTERING A MINIMUM OF 1/4" HIGH, WHITE LETTERS ON A RED BACKGROUND. THE USE OF PEEL-AND-STICK LABELS, PAINT, OR MARKING PENS TO LABEL THE PLATES IS NOT ACCEPTABLE.
4. CUSTOMERS CONSIDERING INTERCONNECTION WITH NET METERING TO A RENEWABLE ENERGY SYSTEM INSTALLED AT THEIR SITE MUST COMPLETE THE APPLICATION, INTERCONNECTION AGREEMENT AND OTHER REQUIRED DOCUMENTATION AND FORWARD THEM TO TAMPA ELECTRIC CO. EARLY IN THE DESIGN PROCESS. DISCONNECT SWITCH MUST BE INSPECTED AND APPROVED BY TAMPA ELECTRIC CO. PRIOR TO PLACING SYSTEM IN SERVICE.
5. IF MORE THAN ONE TAMPA ELECTRIC BILLING METER IS LOCATED ON THE BUILDING, INSTALL A PLACARD ON THE METER AHEAD OF THE RENEWABLE ENERGY SYSTEM STATING "ON-SITE GENERATION". SEE NOTE 3 FOR PLACARD REQUIREMENTS.

➤ DENOTES LATEST REVISION



ENERGY STORAGE SYSTEM RETROFITTING TO EXISTING RENEWABLE GENERATION SYSTEM UTILITY DISCONNECT REQUIREMENTS

TAMPA ELECTRIC COMPANY

STANDARD ELECTRICAL SERVICE REQUIREMENTS

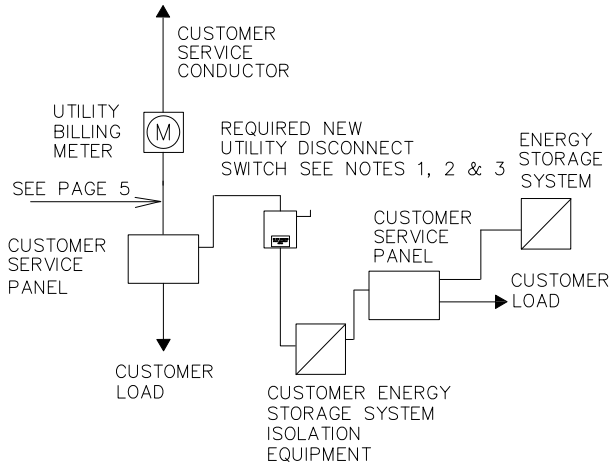
DISTRIBUTION ENGINEERING
 2200 E. SLIGH AVE
 TAMPA FL. 33610
 PH. - (813) 275-3053

7.52

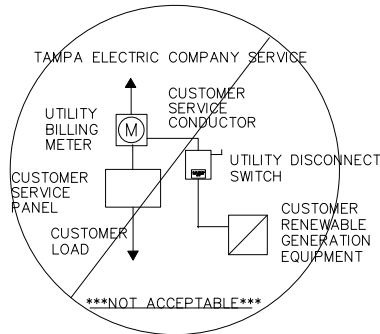
DATE EFFECTIVE: 8-23-22

➤ PAGE 2 OF 5

TAMPA ELECTRIC COMPANY SERVICE

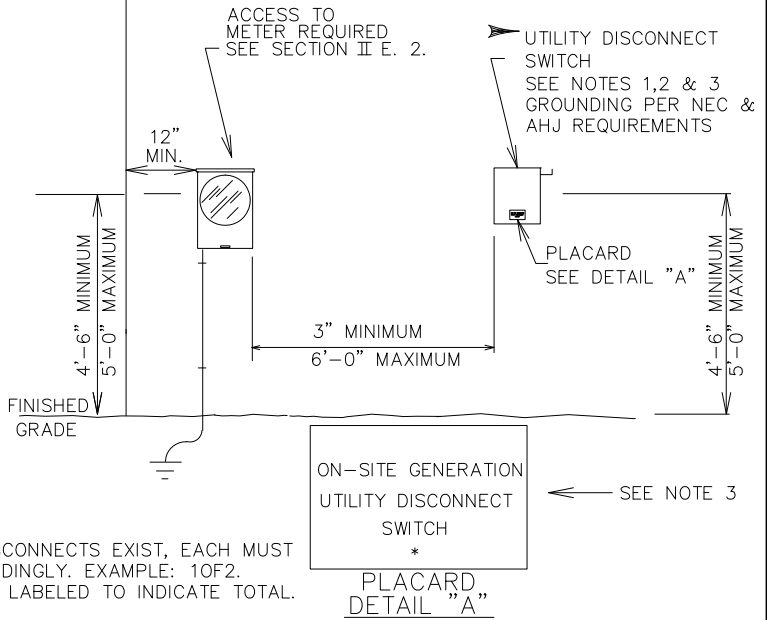


ENERGY STORAGE SYSTEM STANDALONE
WITHOUT RENEWABLE GENERATION
INTERCONNECTION ONE-LINE
DETAIL "D"



NOTE: CONNECTION TO METER CAN IN ANY CONFIGURATION IS NOT ACCEPTABLE

*WHERE MULTIPLE DISCONNECTS EXIST, EACH MUST BE NUMBERED ACCORDINGLY. EXAMPLE: 10F2. METER CAN MUST BE LABELED TO INDICATE TOTAL.



NOTES:

- 1. A MANUAL LOAD BREAK DISCONNECT SWITCH PROVIDING A LOCKABLE VISIBLE BREAK SEPARATION BETWEEN THE UTILITY POWER AND THE AC POWER OUTPUT OF THE RENEWABLE GENERATOR SYSTEM (RGS) SHALL BE PROVIDED. A CIRCUIT BREAKER OR MOLDED CASE SWITCH DOES NOT PROVIDE AN ACCEPTABLE VISIBLE BREAK AND IS NOT ACCEPTABLE. THE UTILITY DISCONNECT SWITCH SHALL BE MOUNTED ADJACENT TO THE UTILITY METER SOCKET ENCLOSURE WITHIN A 6'-0" MAXIMUM DISTANCE, WITHIN LINE OF SIGHT, AND SHALL MEET THE ACCESSIBILITY REQUIREMENTS SPECIFIED IN SESR SECTION VI E FOR METERING EQUIPMENT.
 2. THE FRONT COVER OF THE UTILITY DISCONNECT SWITCH SHALL CONTAIN A PLACARD IDENTIFYING THE ON-SITE POWER GENERATION SOURCE. SEE DETAIL "A".
 3. THE PERMANENT AND DURABLE PLACARD SHALL BE NON-FERROUS METAL OR POLY-PLASTIC PLATES, UV RESISTANT, EPOXY GLUED OR RIVETED TO THE FRONT COVER OF THE DISCONNECT SWITCH WITH ENGRAVED OR STAMPED LETTERING A MINIMUM OF 1/4" HIGH, WHITE LETTERS ON A RED BACKGROUND. THE USE OF PEEL-AND-STICK LABELS, PAINT, OR MARKING PENS TO LABEL THE PLATES IS NOT ACCEPTABLE.
 4. CUSTOMERS CONSIDERING INTERCONNECTION WITH NET METERING TO A RENEWABLE ENERGY SYSTEM INSTALLED AT THEIR SITE MUST COMPLETE THE APPLICATION, INTERCONNECTION AGREEMENT AND OTHER REQUIRED DOCUMENTATION AND FORWARD THEM TO TAMPA ELECTRIC CO. EARLY IN THE DESIGN PROCESS. DISCONNECT SWITCH MUST BE INSPECTED AND APPROVED BY TAMPA ELECTRIC CO. PRIOR TO PLACING SYSTEM IN SERVICE.
 5. IF MORE THAN ONE TAMPA ELECTRIC BILLING METER IS LOCATED ON THE BUILDING, INSTALL A PLACARD ON THE METER AHEAD OF THE RENEWABLE ENERGY SYSTEM STATING "ON-SITE GENERATION". SEE NOTE 3 FOR PLACARD REQUIREMENTS.
- DENOTES LATEST REVISION

ENERGY STORAGE SYSTEM WITHOUT RENEWABLE GENERATION
SYSTEM UTILITY DISCONNECT REQUIREMENTS

TAMPA
ELECTRIC
COMPANY

STANDARD ELECTRICAL
SERVICE REQUIREMENTS

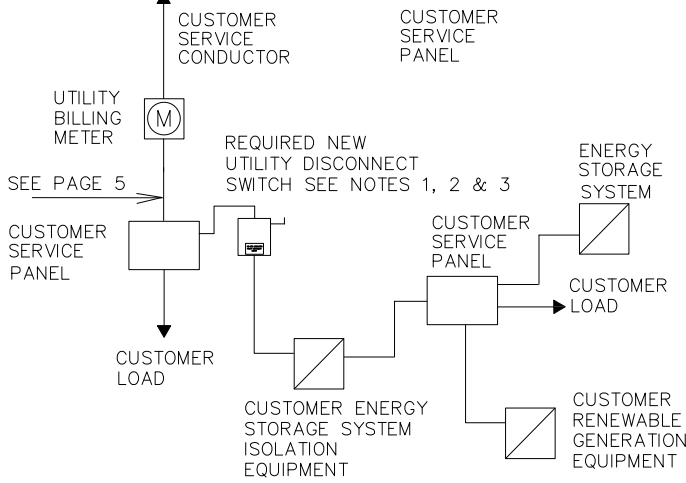
DISTRIBUTION ENGINEERING
2200 E. SLIGH AVE
TAMPA FL. 33610
PH. - (813) 275-3053

7.52

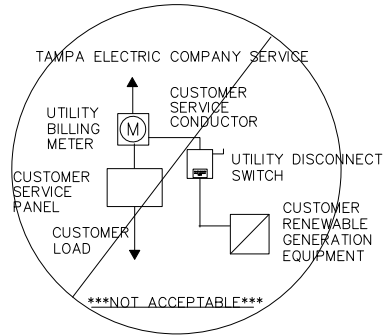
DATE EFFECTIVE: 8-23-22

➤ PAGE 3 OF 5

TAMPA ELECTRIC COMPANY SERVICE



**ENERGY STORAGE SYSTEM NEW INSTALLATION
WITH NEW RENEWABLE GENERATION
INTERCONNECTION ONE-LINE
DETAIL "E"**

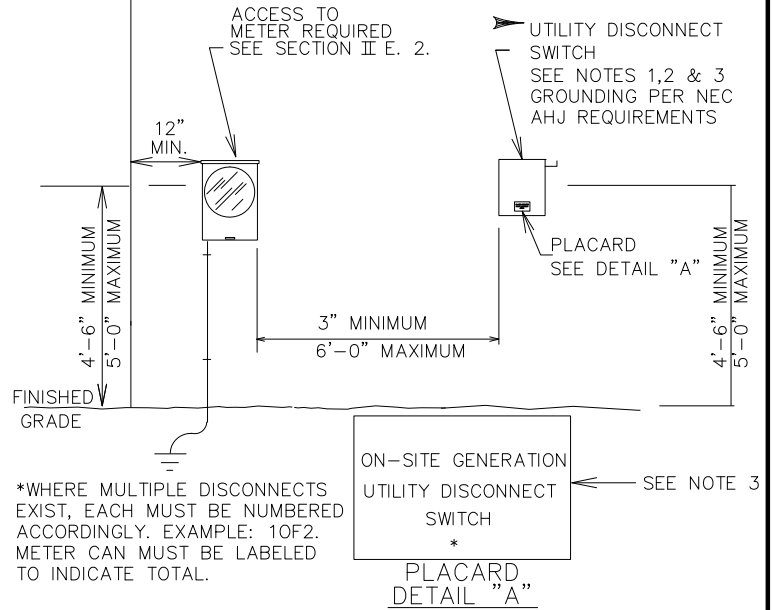


NOTE: CONNECTION TO METER CAN IN ANY CONFIGURATION IS NOT ACCEPTABLE

NOTES:

- 1. A MANUAL LOAD BREAK DISCONNECT SWITCH PROVIDING A LOCKABLE VISIBLE BREAK SEPARATION BETWEEN THE UTILITY POWER AND THE AC POWER OUTPUT OF THE RENEWABLE GENERATOR SYSTEM (RGS) SHALL BE PROVIDED. A CIRCUIT BREAKER OR MOLDED CASE SWITCH DOES NOT PROVIDE AN ACCEPTABLE VISIBLE BREAK AND IS NOT ACCEPTABLE. THE UTILITY DISCONNECT SWITCH SHALL BE MOUNTED ADJACENT TO THE UTILITY METER SOCKET ENCLOSURE WITHIN A 6'-0" MAXIMUM DISTANCE, WITHIN LINE OF SIGHT, AND SHALL MEET THE ACCESSIBILITY REQUIREMENTS SPECIFIED IN SESR SECTION VI E FOR METERING EQUIPMENT.
2. THE FRONT COVER OF THE UTILITY DISCONNECT SWITCH SHALL CONTAIN A PLACARD IDENTIFYING THE ON-SITE POWER GENERATION SOURCE. SEE DETAIL "A".
3. THE PERMANENT AND DURABLE PLACARD SHALL BE NON-FERROUS METAL OR POLY-PLASTIC PLATES, UV RESISTANT, EPOXY GLUED OR RIVETED TO THE FRONT COVER OF THE DISCONNECT SWITCH WITH ENGRAVED OR STAMPED LETTERING A MINIMUM OF 1/4" HIGH, WHITE LETTERS ON A RED BACKGROUND. THE USE OF PEEL-AND-STICK LABELS, PAINT, OR MARKING PENS TO LABEL THE PLATES IS NOT ACCEPTABLE.
4. CUSTOMERS CONSIDERING INTERCONNECTION WITH NET METERING TO A RENEWABLE ENERGY SYSTEM INSTALLED AT THEIR SITE MUST COMPLETE THE APPLICATION, INTERCONNECTION AGREEMENT AND OTHER REQUIRED DOCUMENTATION AND FORWARD THEM TO TAMPA ELECTRIC CO. EARLY IN THE DESIGN PROCESS. DISCONNECT SWITCH MUST BE INSPECTED AND APPROVED BY TAMPA ELECTRIC CO. PRIOR TO PLACING SYSTEM IN SERVICE.
5. IF MORE THAN ONE TAMPA ELECTRIC BILLING METER IS LOCATED ON THE BUILDING, INSTALL A PLACARD ON THE METER AHEAD OF THE RENEWABLE ENERGY SYSTEM STATING "ON-SITE GENERATION". SEE NOTE 3 FOR PLACARD REQUIREMENTS.

➤ DENOTES LATEST REVISION



ENERGY STORAGE SYSTEM NEW INSTALLATION WITH NEW RENEWABLE GENERATION SYSTEM UTILITY DISCONNECT REQUIREMENTS

TAMPA
ELECTRIC
COMPANY

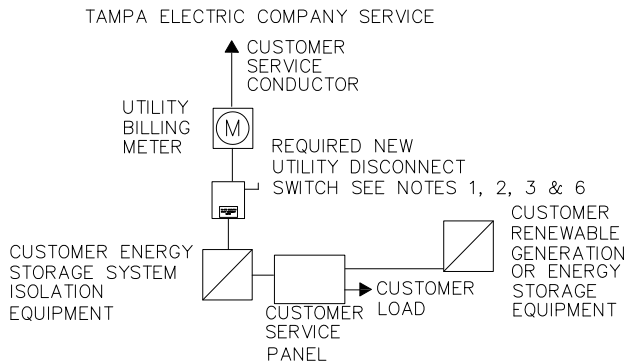
STANDARD ELECTRICAL
SERVICE REQUIREMENTS

DISTRIBUTION ENGINEERING
2200 E. SLIGH AVE
TAMPA FL. 33610
PH. - (813) 275-3053

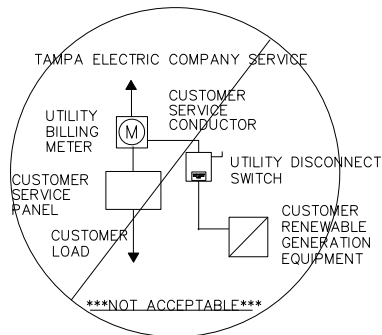
7.52

DATE EFFECTIVE: 9-26-22

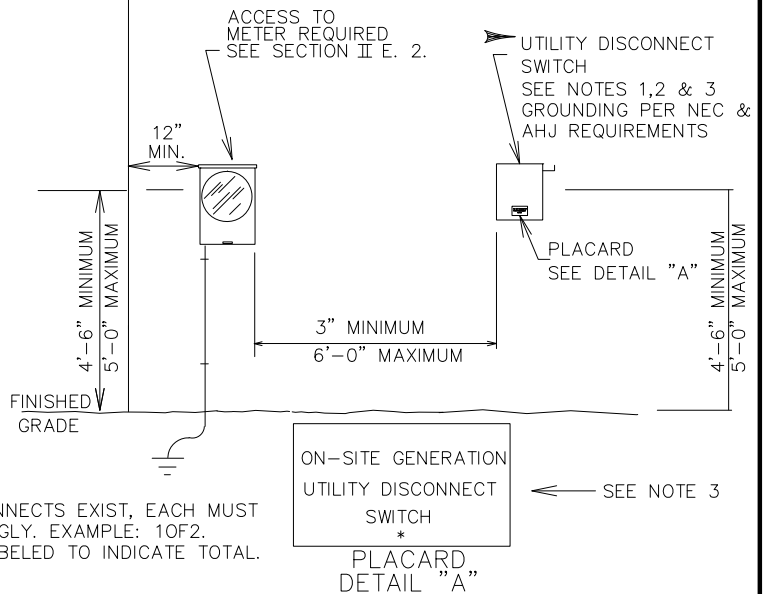
PAGE 4 OF 5



ENERGY STORAGE SYSTEM OR RENEWABLE GENERATION CONNECTED TO MAIN PANEL INTERCONNECTION ONE-LINE DETAIL "F"



NOTE: CONNECTION TO METER CAN IN ANY CONFIGURATION IS NOT ACCEPTABLE



*WHERE MULTIPLE DISCONNECTS EXIST, EACH MUST BE NUMBERED ACCORDINGLY. EXAMPLE: 10F2. METER CAN MUST BE LABELED TO INDICATE TOTAL.

NOTES:

- 1. A MANUAL LOAD BREAK DISCONNECT SWITCH PROVIDING A LOCKABLE VISIBLE BREAK SEPARATION BETWEEN THE UTILITY POWER AND THE AC POWER OUTPUT OF THE RENEWABLE GENERATOR SYSTEM (RGS) SHALL BE PROVIDED. A CIRCUIT BREAKER OR MOLDED CASE SWITCH DOES NOT PROVIDE AN ACCEPTABLE VISIBLE BREAK AND IS NOT ACCEPTABLE. THE UTILITY DISCONNECT SWITCH SHALL BE MOUNTED ADJACENT TO THE UTILITY METER SOCKET ENCLOSURE WITHIN A 6'-0" MAXIMUM DISTANCE, WITHIN LINE OF SIGHT, AND SHALL MEET THE ACCESSIBILITY REQUIREMENTS SPECIFIED IN SESR SECTION VI E FOR METERING EQUIPMENT.
2. THE FRONT COVER OF THE UTILITY DISCONNECT SWITCH SHALL CONTAIN A PLACARD IDENTIFYING THE ON-SITE POWER GENERATION SOURCE. SEE DETAIL "A".
3. THE PERMANENT AND DURABLE PLACARD SHALL BE NON-FERROUS METAL OR POLY-PLASTIC PLATES, UV RESISTANT, EPOXY GLUED OR RIVETED TO THE FRONT COVER OF THE DISCONNECT SWITCH WITH ENGRAVED OR STAMPED LETTERING A MINIMUM OF 1/4 HIGH, WHITE LETTERS ON A RED BACKGROUND. THE USE OF PEEL-AND-STICK LABELS, PAINT, OR MARKING PENS TO LABEL THE PLATES IS NOT ACCEPTABLE.
4. CUSTOMERS CONSIDERING INTERCONNECTION WITH NET METERING TO A RENEWABLE ENERGY SYSTEM INSTALLED AT THEIR SITE MUST COMPLETE THE APPLICATION, INTERCONNECTION AGREEMENT AND OTHER REQUIRED DOCUMENTATION AND FORWARD THEM TO TAMPA ELECTRIC CO. EARLY IN THE DESIGN PROCESS. DISCONNECT SWITCH MUST BE INSPECTED AND APPROVED BY TAMPA ELECTRIC CO. PRIOR TO PLACING SYSTEM IN SERVICE.
5. IF MORE THAN ONE TAMPA ELECTRIC BILLING METER IS LOCATED ON THE BUILDING, INSTALL A PLACARD ON THE METER AHEAD OF THE RENEWABLE ENERGY SYSTEM STATING "ON-SITE GENERATION". SEE NOTE 3 FOR PLACARD REQUIREMENTS.
6. WHERE CUSTOMER MAIN PANEL CONTAINS CONNECTION OF RENEWABLE GENERATION OR ENERGY STORAGE EQUIPMENT, AND ISOLATION EQUIPMENT IS UPSTREAM OF MAIN PANEL, DISCONNECT SWITCH SHALL BE UPSTREAM OF MAIN PANEL AS SHOWN IN DETAIL "F".

➤ DENOTES LATEST REVISION

ENERGY STORAGE SYSTEM OR RENEWABLE GENERATION SYSTEM CONNECTED TO MAIN PANEL UTILITY DISCONNECT REQUIREMENTS

TAMPA ELECTRIC COMPANY

STANDARD ELECTRICAL SERVICE REQUIREMENTS

DISTRIBUTION ENGINEERING
2200 E. SLIGH AVE
TAMPA FL. 33610
PH. - (813) 275-3053

DATE EFFECTIVE: 8-23-22

7.52

➤ PAGE 5 OF 5