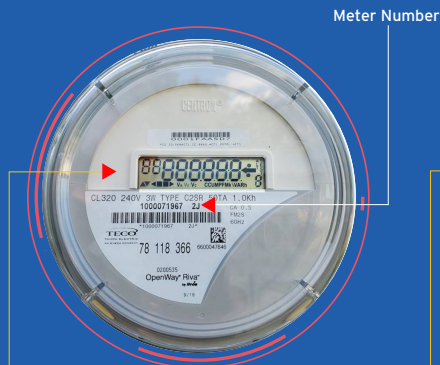


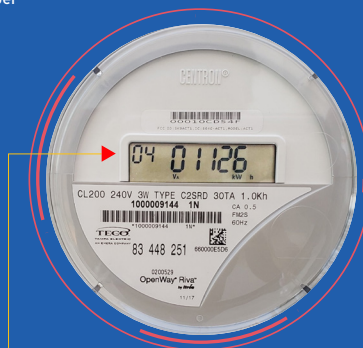
Reading the digital display on your smart meter

Your smart meter automatically cycles through six different displays. Each display appears below with a brief explanation.



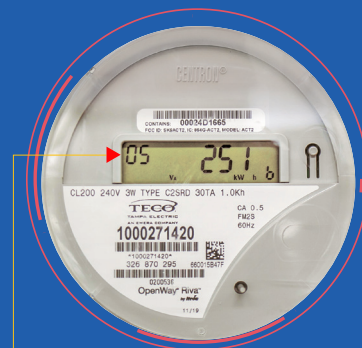
◦ Segment Check

- Test mode to verify that all LED displays are functioning properly.



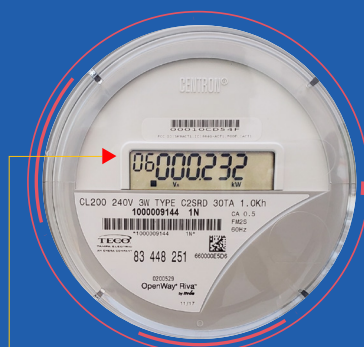
◦ Display 4

- Energy you consumed from Tampa Electric's grid in kilowatt-hours (kWh). Also referred to as **Delivered kWh**.



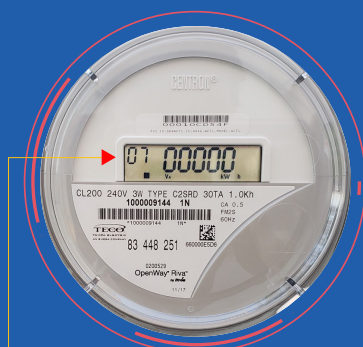
◦ Display 5

- Off-peak energy usage in kilowatt-hours (kWh) for commercial customers on the Time of Day rate.



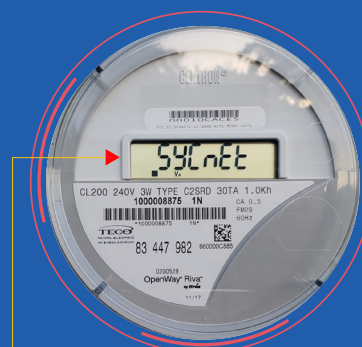
◦ Display 6

- Energy demand in kilowatts (kW). Appears only on large residential and commercial customer meters.



◦ Display 7

- Energy your solar array or renewable generating system delivered to Tampa Electric's grid in kWh. Also referred to as **Received kWh**.



◦ Sync Net Display

- Meter is synced to and communicating with Tampa Electric's network.