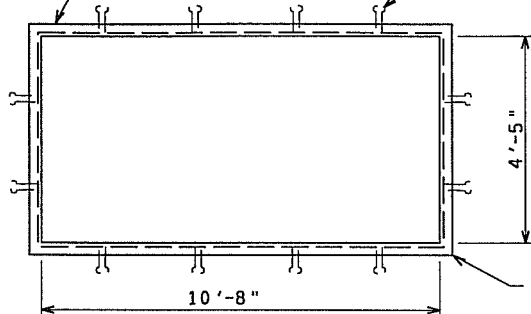


SEE
DETAIL "A"

1/2" DIAMETER X 3" CONCRETE EMBEDDED
STUD ANCHOR, WELDED ON 15" CENTERS,
PRIOR TO GALVANIZING.



**PIT FRAME
PLAN VIEW**

NOTE:
ALL MATERIAL SHALL BE HOT DIPPED
GALVANIZED AFTER FABRICATION.

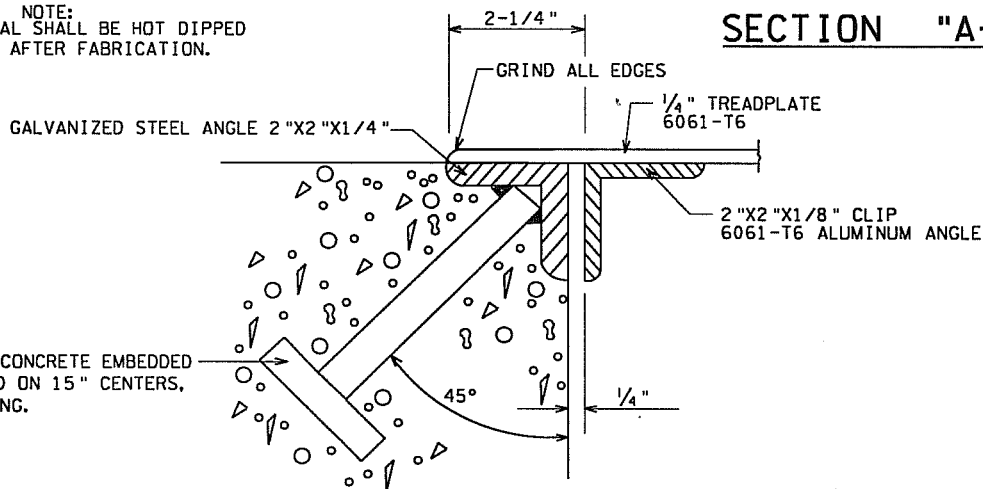
CONTRACTUAL AGREEMENTS AND EASEMENTS OUTLINING THE RESPONSIBILITIES OF TAMPA ELECTRIC COMPANY AND THE CUSTOMER WILL ALWAYS BE REQUIRED. IN NO WAY SHALL THIS REQUIREMENT BE CONSTRUED AS AN APPROVED VAULT CONSTRUCTION DESIGN REQUIREMENT UNLESS PRESENTED IN THE FORM OF A CONTRACTUAL AGREEMENT BETWEEN TAMPA ELECTRIC COMPANY AND THE CUSTOMER. TAMPA ELECTRIC COMPANY ASSUMES NO LIABILITY FOR STRUCTURAL DESIGN SPECIFICATIONS OF ANY VAULT.

STEEL ANGLE 2"X2"X1/4" THICK
DIMENSIONED AS SHOWN.



LOCATE CLIPS TO CLEAR
CONCRETE ANGLE

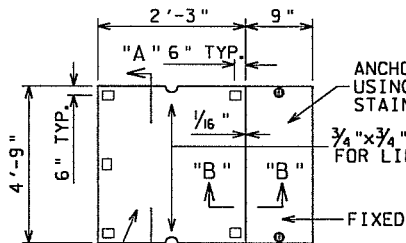
SECTION "A-A"



DETAIL "A"

1/2" DIAMETER X 3" CONCRETE EMBEDDED
STUD ANCHOR, WELDED ON 15" CENTERS,
PRIOR TO GALVANIZING.

CLIPS TO BE 2" x 2" x 1/8" THICK BY 2" LONG 6061-T6 ALUMINUM ANGLE; WELD TO BOTTOM OF COVER. TYPICAL FOR 5 CLIPS.



REMOVEABLE "A"
COVER TO BE 6061-T6 ALUMINUM TREADPLATE (1/4" THICK)

ANCHOR 9" TREADPLATE USING LEAD ANCHORS AND STAINLESS STEEL BOLTS.
3/4" x 3/4" SLOT FOR LIFTING
FIXED
ALUMINUM TREADPLATE 6061-T6
1/4" x 3" x 3" x 4'-0" LONG ALUMINUM TEE 6063-T5
WELD TO 9" SECURED COVER AS SHOWN.

PIT COVER DETAILS

(BOTTOM SIDE, TWO SEPARATE COVERS)
FOUR COVERS REQUIRED

SECTION "B-B"

DETAIL "B"

DETAIL "C"

▲ DENOTES LATEST REVISION

3	SJH	5-17-07	REVISED TITLE BLOCK
2	MFK	8-21-03	SPLIT SPECIFICATIONS
1	MFK	4-17-03	LABELED DETAILS
NO.	CK'D	DATE	REVISION

**TYPICAL FRAME & COVER DETAILS
600 AMP MANUAL AND AUTO-THROWOVER
PIT AREA**

MGR: STD'S
APPR. DATE 5-17-07
SUPERSEDES 13-23/8-21-03

Bob Shirley