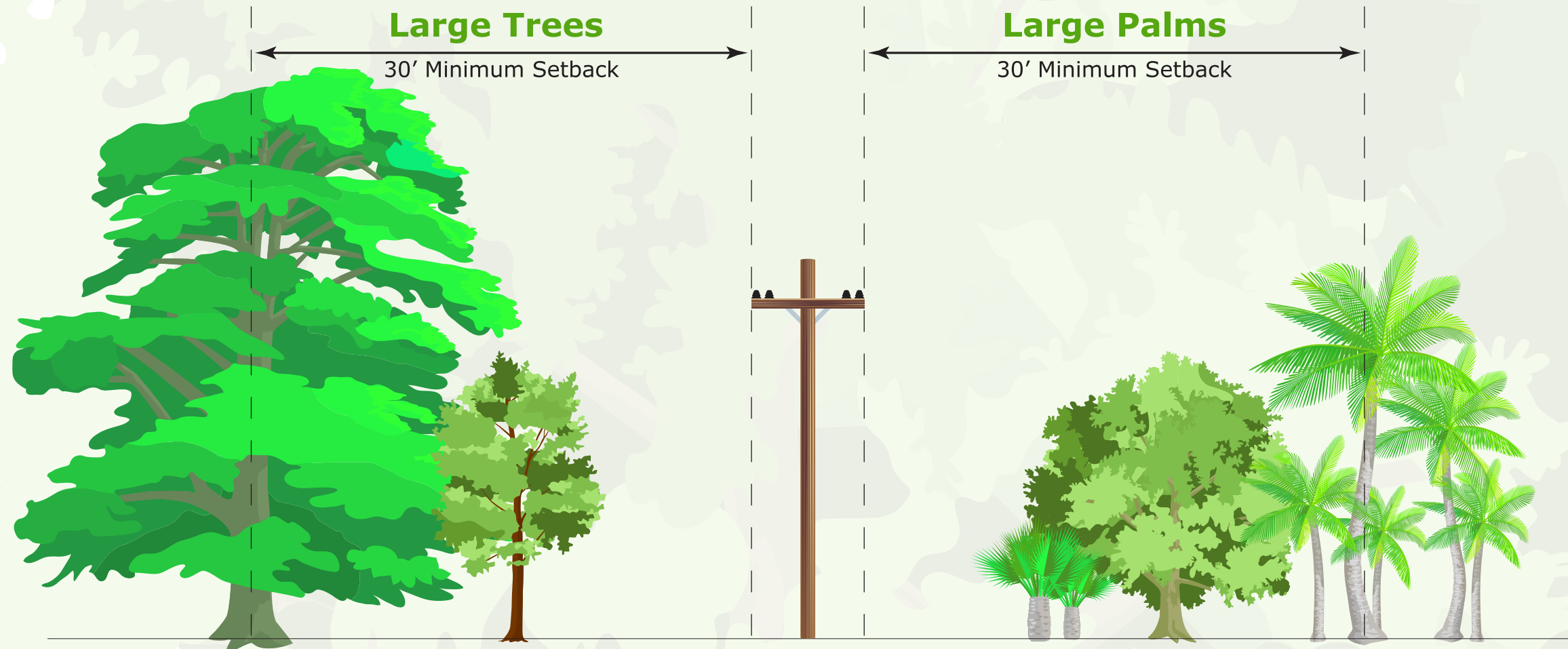


Tree Planting & Safety Guide

The right trees can help make our community beautiful. Follow these planting recommendations to maintain safe, reliable electric service.

Recommended Setback Distances from Power Lines



Large Trees (over 25')

Bald Cypress	Slash Pine
Chinese Elm	Swamp Chestnut
Live Oak	Sweetbay
Magnolia	Sweetgum
Redcedar	Sycamore
Shumard Oak	Winged Elm



Small Trees & Palms

Chickasaw Plum	Pindo Palm
Fringe Tree	Pittosporum
Holly	Privet
Paurotis Palm	Viburnum



Large Palms (over 25')

Date Palm	Sabal Palm
Queen Palm	Washingtonia Palm

*Right Tree.
Right Place.*