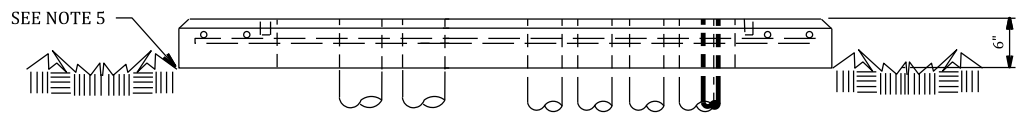
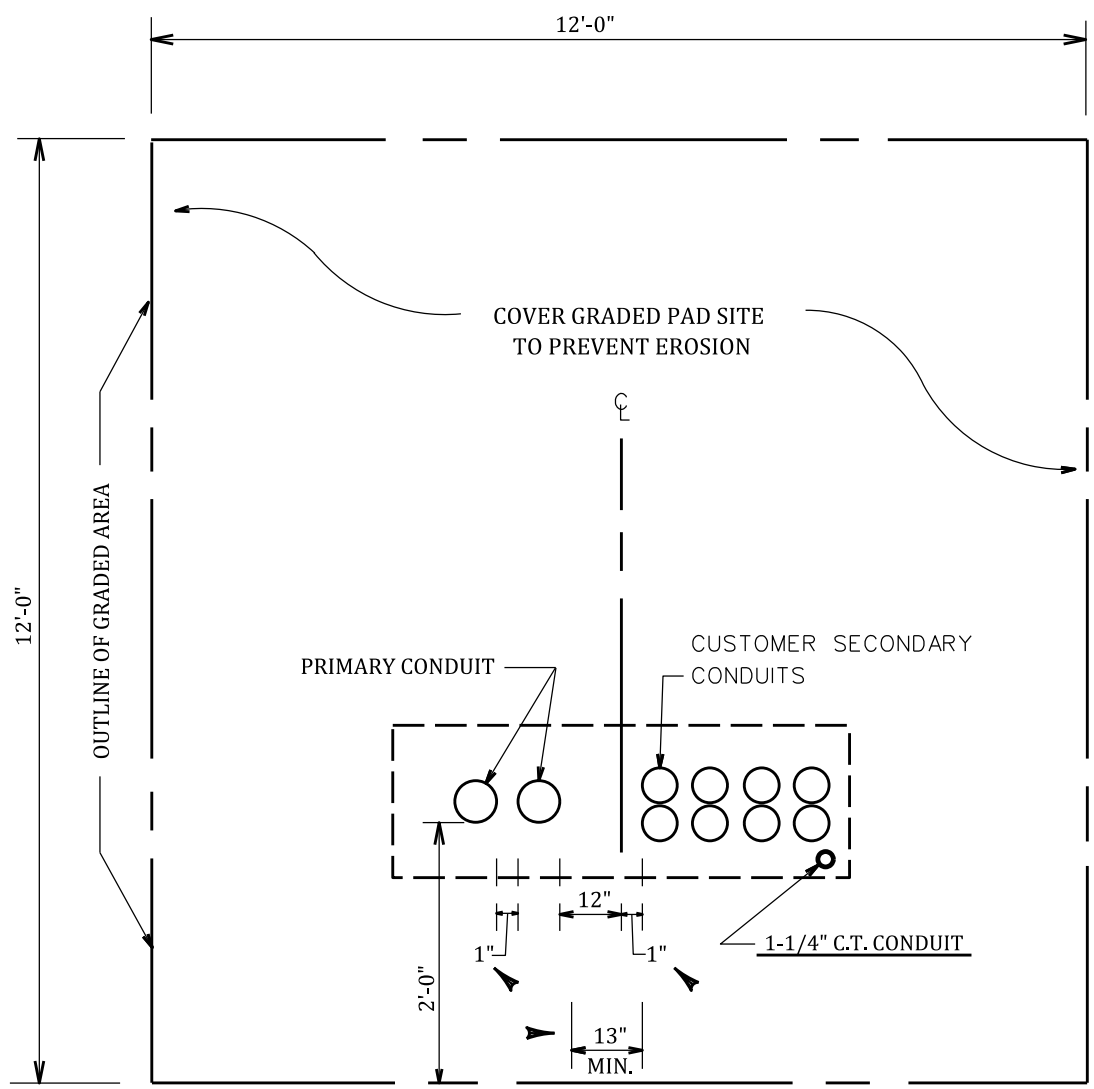


REFERENCES	
GR&S UG	
STD. 1-17	
STD. 1-45	
STD. 7-16	
STD. 9-5	
SEC. 6	



NOTES:

1. CUSTOMER CONDUIT MUST BE IN PLACE BEFORE PAD IS SET OR POURED.
2. PROVIDE 12'X12' COMPACTED AND FLAT LEVEL AREA AT FINISHED GRADE SEE OUTLINE ABOVE.
3. ALL CONDUITS TO HAVE 36" MIN. COVER
4. CUSTOMERS SECONDARY CABLE, WHEN INSTALLED TO BE MARKED & IDENTIFIED.
5. BOTTOM OF PAD TO BE EQUAL TO TOP OF SIDEWALK, SOD, DIRT, MULCH & CONCRETE, ETC.
6. FINISHED GRADE MARK TO BE NOTED ON PRIMARY CONDUIT WITH BLACK MARKER.
7. THE GRADED SITE SHALL BE COVERED WITH SOD OR SUITABLE PLASTIC TO PROTECT IT FROM EROSION.
8. SLOPED AREAS ADJACENT TO THE SITE MAY REQUIRE EROSION PROTECTION AT THE DIRECTION OF TEC PERSONNEL.
9. PRIMARY & SERVICE CONDUIT TO BE SEPARATED A MINIMUM OF 13".

7	SJH	7-20-16	ADD NOTE 9
6	SJH	7-20-16	ADD 1" BETWEEN PRIMARY & SECONDARY CONDUITS
5	MFK	6-15-06	ADDED NOTES 7 & 8, COVER GRADED PAD SITE
4	MFK	8-18-05	ADDED NOTE 6, REVISED REFERENCE BLOCK
3	MFK	11-4-04	ADD STD. 9-5 TO REFERENCE BLOCK
NO.	CK'D	DATE	REVISION

◀ DENOTES LATEST REVISION

MGR: STD'S	
APPR. DATE	7-20-16
SUPERSEDES	1-47/6-15-06
<b>1-47</b>	

## SITE PREPARATION THREE-PHASE PAD-MOUNT TRANSFORMER INSTALLATION