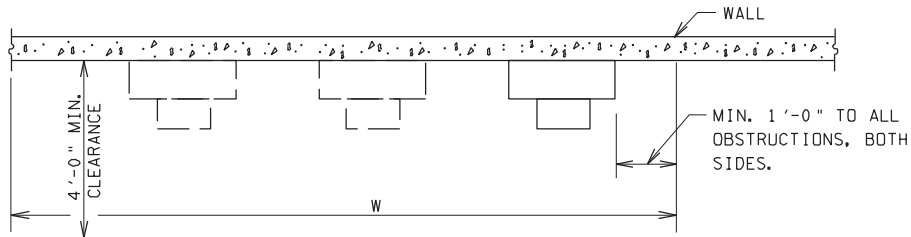
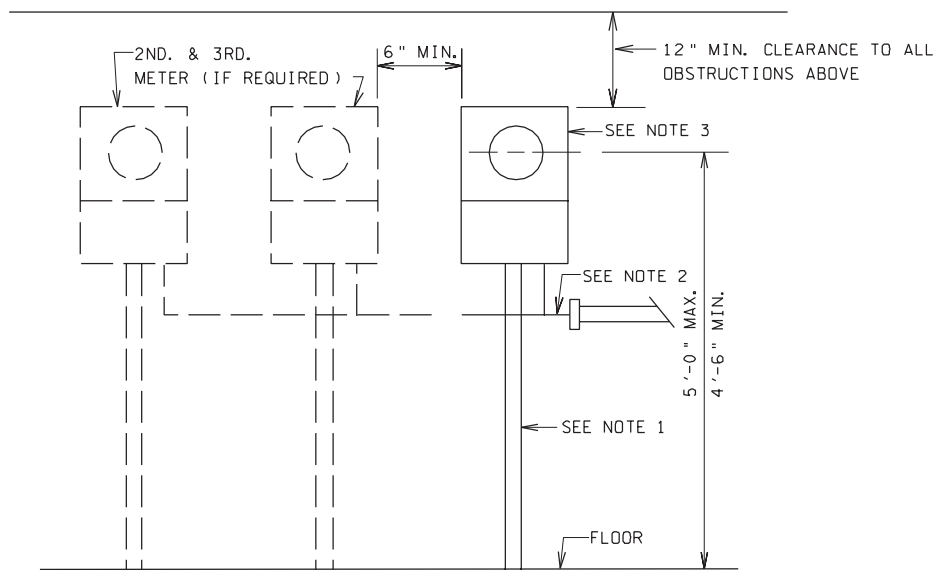


NO. OF CIRCUITS/SERVICES TO BE METERED/TOTALIZED	NO. OF METERING CABINETS REQUIRED	TOTAL WIDTH REQUIRED - W
1	1	3'
2	2	4'-6"
3	3	6'-0"
4	4	7'-6"



TOP VIEW



FRONT VIEW

NOTES: (REF. DESIGN CRITERIA FOR VAULTS)

- 1-1/4" OR 1" GALVANIZED OR ALUMINUM RIGID CONDUIT FROM CT LOCATION. TERMINATE WITH LOCKNUTS AND BUSHING.
- 1" GALVANIZED OR ALUMINUM RIGID CONDUIT WITH #4 AWG COPPER GROUND WIRE, ORIGINATING AT SWITCHGEAR GROUND.
- METER SOCKET, SUPPLIED BY THE COMPANY, INSTALLED BY CUSTOMER CONTRACTOR. METER CABINET IS APPROXIMATELY 20" H X 12" W X 6" D.

◀ DENOTES LATEST REVISION

TYPICAL SPACE AND INSTALLATION REQUIREMENTS FOR METERING CABINETS

MGR: STD'S
 APPR. DATE 1-20-94
 SUPERSEDES