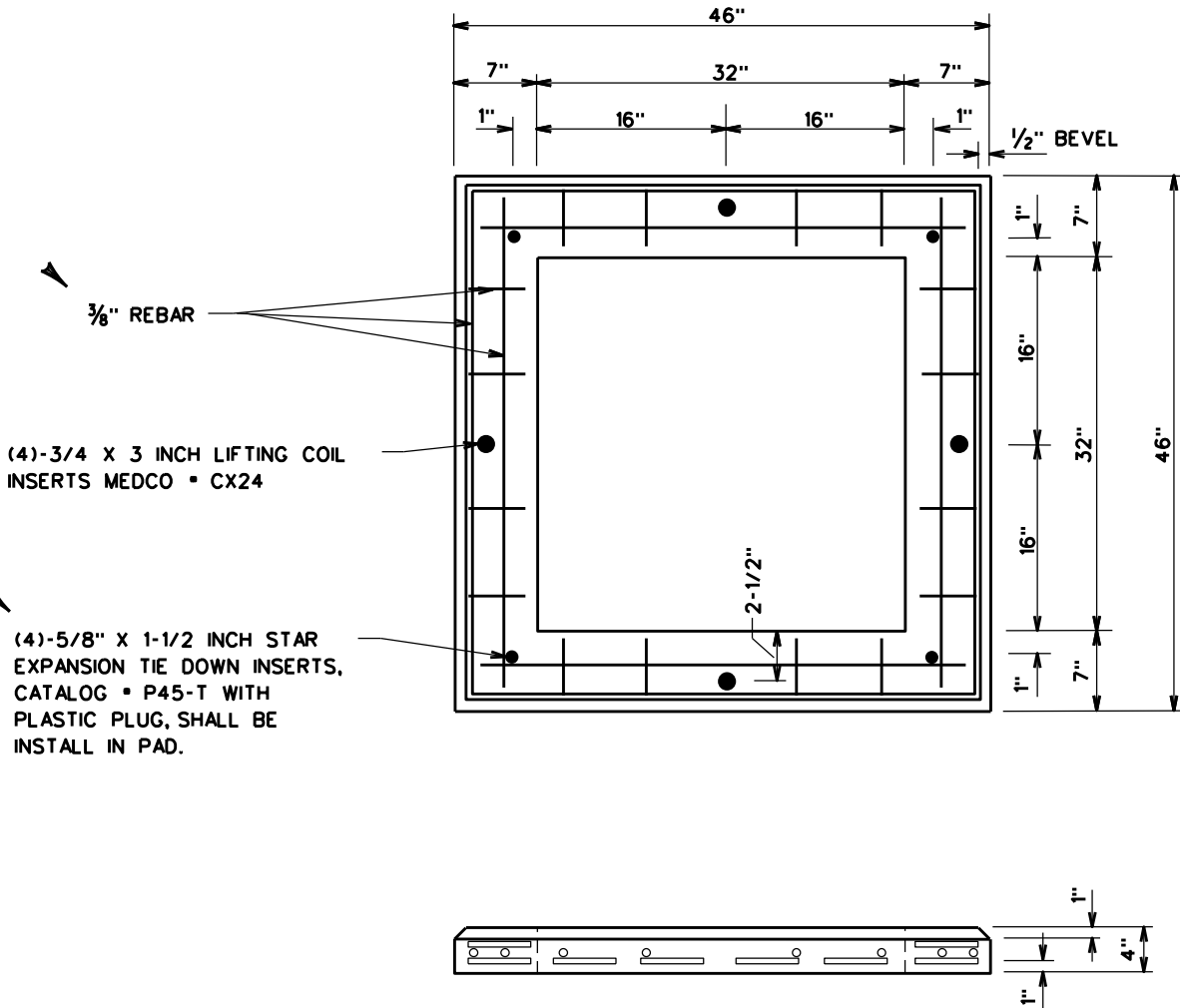


NOTES:

1. IF PRECAST PAD TEC NO. 2001326 IS NOT AVAILABLE USE POURED IN PLACE PAD PER M-DRAWING NO. M-458.
2. THE COIL INSERTS SHALL BE SET FLUSH OR NO MORE THAN A 1/4" BELOW THE TOP OF THE PAD.
3. JOINTS IN REINFORCING RODS SHALL BE OVERLAPPED AND BOUND WITH WIRE TIES OR WELDED.



TEC NO. 2001326

◀ DENOTES LATEST REVISION

PAD DETAIL FOR PAD-MOUNTED
SECONDARY TERMINATION CABINET

SEY/
MGR: STD'S *Bob Shively*
APPR. DATE 3-17-94
SUPERSEDES 6-20/10-19-89

6-20

TAMPA ELECTRIC CO.

STANDARDS

GENERAL RULES & SPECIFICATIONS UG.